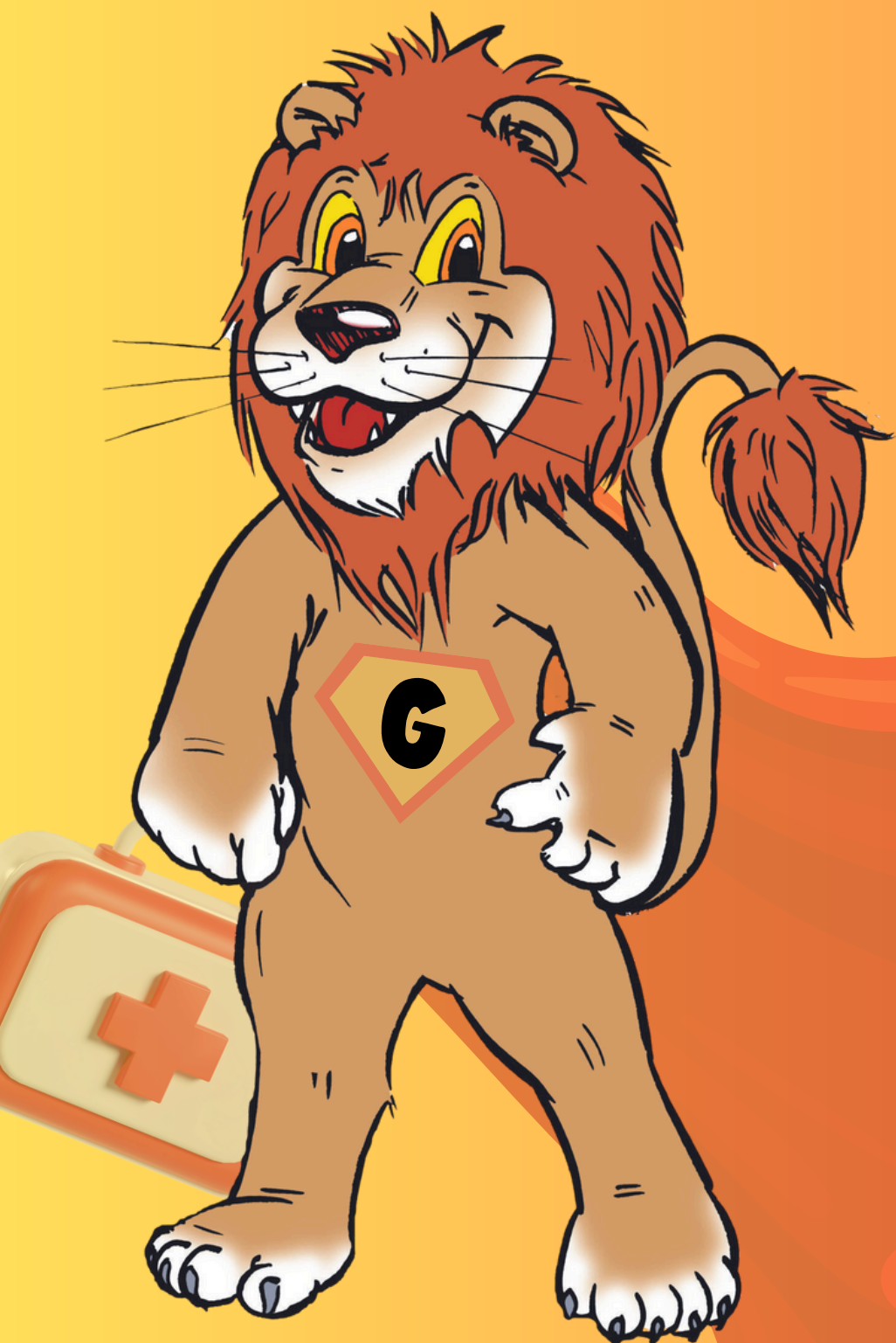


GUSCHU OPEN

2024

ERGEBNISSE





Guschu Open 2024
RESULTS
LG Junioren I m
Individual
Hochbrück
SAT 13 JUL 2024, START TIME 08:10



Rank	FP	Bib No	Name	Nat	Series				Total	Remarks
					1	2	3	4		
1	22	918	STELZL Elias	BAY	104.3	103.0	102.2	102.4	411.9	
2	4	79	SCHARNAGL Raffael	BAY	103.7	101.0	102.9	103.6	411.2	
3	6	147	HUBER Alexander	BAY	99.6	100.7	100.4	97.2	397.9	
4	9	463	FLEISCHMANN Moritz	BAY	97.8	98.1	99.2	100.1	395.2	
5	49	769	BOGNER Robin	BAY	98.9	97.7	90.0	101.6	388.2	
6	2	31	BUCHEN Yannick	BAY	94.2	97.8	97.2	95.6	384.8	
7	17	737	MOHR Moritz	BAY	95.4	91.7	94.7	97.8	379.6	
8	8	256	BITTSCH Erwin	BAY	91.6	97.3	93.4	97.0	379.3	
9	19	753	MAYR Johannes	BAY	97.5	93.4	90.6	97.7	379.2	
10	18	738	MÖLLER Moritz	BAY	94.6	92.6	98.7	92.1	378.0	
11	3	60	FLIEDER Lorenz	BAY	90.8	94.2	97.0	94.0	376.0	
12	21	756	LUTZ Maximilian	BAY	90.7	94.5	87.2	92.0	364.4	
13	11	598	LEY Richard	BAY	89.1	89.4	89.6	84.5	352.6	
14	23	934	SCHÖLDERLE Sebastian	BAY	80.0	86.7	91.6	92.7	351.0	
15	15	735	SCHENKER Daniel	BAY	88.7	86.3	85.9	87.6	348.5	
16	16	736	SCHEPPACH Vinzenz	BAY	89.6	87.3	87.8	83.6	348.3	
17	10	597	FAHRENSCHON Elias	BAY	75.1	67.7	79.3	72.6	294.7	
	7	242	FRITZ Johannes	BAY						DNS
	5	109	GROTZ Jonas	BAY						DNS
	25	1069	HOLZMANN Niklas	BAY						DNS
	13	628	KARG Juliano	BAY						DNS
	12	612	PFÄFFLE Lukas	BAY						DNS
	20	755	VOGLER Matthias	BAY						DNS

Protest Date / Time:

Summary

Number of athletes on this list: 23; Total number of athletes: 23

Legend

Bib No Bib Number DNS Did Not Start FP Firing Point
Nat Nation

B5DB4850

Version of 13 JUL 2024, 10:30

I100000IA1307240810.1.LGJ1M.0.001.pdf

67AF

1

Page 1 of 1



OFFICIAL ISSF RESULTS PROVIDER



Guschu Open 2024
RESULTS
LG Junioren I m
Individual
Hochbrück
SAT 13 JUL 2024, START TIME 08:10



Rank	FP	Bib No	Name	Nat	Series				Total	Remarks
					1	2	3	4		
1	72	919	STADLER Lisa	BAY	102.5	104.2	104.5	102.5	413.7	
2	82	174	FIßLER Jana	OP	100.8	99.3	102.1	98.5	400.7	
3	61	117	DRMOLA Pia	WT	100.8	99.0	102.2	97.7	399.7	
4	70	676	SCHUMANN Inaara	BAY	98.4	98.9	98.6	97.6	393.5	
5	63	334	BRETTEL Leonie	BAY	95.7	98.0	98.7	100.3	392.7	
6	65	611	KÖHLER Franziska	BAY	99.4	94.6	96.5	94.8	385.3	
7	73	999	LEUKEFELD Rebecca	BAY	93.8	96.4	95.2	96.4	381.8	
8	64	442	KRAUS Christin	BAY	96.3	89.2	91.8	92.3	369.6	
9	69	642	MUHR Vanessa	BAY	90.6	94.3	93.4	88.1	366.4	
10	74	1005	GERBLINGER Hannah	BAY	88.4	94.2	90.3	91.8	364.7	
11	62	230	WAGNER Mia	BAY	92.3	93.0	86.8	89.3	361.4	
12	81	166	BÖHM Alexandra	OP	81.9	85.8	91.4	84.8	343.9	
	71	849	FERSTL Danielle	BAY						DNS
	66	615	HAIN Sophie	BAY						DNS
	68	629	PFEFFERLE Katja	BAY						DNS
	67	619	TRAXLER Johanna	BAY						DNS

Protest Date / Time:

Summary

Number of athletes on this list: 16; Total number of athletes: 16

Legend

Bib No Bib Number
Nat Nation

DNS

Did Not Start

FP

Firing Point

F34E4CAF

Version of 13 JUL 2024, 10:29

I000000IA1307240810.1.LGJ1W.0.001.pdf

67AF

2

Page 1 of 1



OFFICIAL ISSF RESULTS PROVIDER



Guschu Open 2024
RESULTS
LG Junioren II m
Individual
Hochbrück
SAT 13 JUL 2024, START TIME 08:10



Rank	FP	Bib No	Name	Nat	Series				Total	Remarks
					1	2	3	4		
1	23	695	RUHLAND Noah	BAY	102.8	103.9	103.0	98.9	408.6	
2	2	48	ZEIGERMANN Jamie	BAY	100.0	101.4	103.3	98.9	403.6	
3	14	437	GREIMEL Christoph	BAY	101.3	99.7	98.2	99.9	399.1	
4	38	1041	WILHALM Felix	ITA	97.9	100.6	99.6	100.0	398.1	
5	33	964	NUßBAUM André	BAY	99.0	98.8	99.0	99.3	396.1	
6	40	1050	MAIR Hannes	ITA	97.8	99.4	98.6	96.7	392.5	
7	9	253	UNTERHOLZNER Dominik	BAY	94.5	98.6	96.6	99.1	388.8	
8	36	989	FRIEDL Michael	BAY	97.0	98.0	96.8	95.4	387.2	
9	15	1111	WALLMEYER Maximilian	BAY	97.5	96.0	95.9	95.6	385.0	
10	22	678	THEISS Timo	BAY	95.4	95.3	97.6	92.4	380.7	
11	20	622	SCHERER Johannes	BAY	97.5	89.3	96.8	96.1	379.7	
12	13	376	GEßLER Patrick	BAY	91.9	93.4	94.5	99.0	378.8	
13	12	368	WEBER Christoph	BAY	92.7	94.9	96.6	93.9	378.1	
14	32	961	BAUMANN Lukas	BAY	91.1	93.4	97.2	87.1	368.8	
15	6	157	RAUSCHEN Tobias	BAY	91.1	94.3	92.4	90.2	368.0	
16	42	1066	GENETH Jonathan	ITA	90.9	87.7	93.9	94.1	366.6	
17	8	233	GRAF Leonhard	BAY	91.8	90.3	95.5	86.1	363.7	
18	4	98	WEIDLER Fabio	BAY	92.8	88.4	90.2	88.4	359.8	
19	17	567	HEINRICH Jonas	BAY	95.6	89.5	87.9	85.7	358.7	
20	18	568	LINDERMEIR Elia	BAY	82.8	83.7	90.8	95.2	352.5	
21	5	152	FÖRSTL Michi	BAY	86.3	85.7	88.3	90.3	350.6	
22	37	1024	HERTZ Max	BAY	78.1	87.5	91.8	92.6	350.0	
23	7	210	SCHMIDT Daniel	BAY	84.7	86.4	92.1	80.6	343.8	
24	41	1051	GEMASSMER Ivan	ITA	75.9	90.8	88.1	87.8	342.6	
25	16	566	LEHNER Hannes	BAY	83.0	88.2	80.8	86.1	338.1	
26	29	911	TAXIS Timo	WT	83.1	86.4	78.4	82.9	330.8	
27	30	952	WEIßMEIER Jacob	BAY	73.1	78.3	82.4	83.1	316.9	
28	34	984	POLOMSKI Felix	BAY	81.5	72.7	83.0	63.5	300.7	
29	27	754	HAUG Patrick	BAY	67.0	78.5	70.5	80.0	296.0	
30	28	764	BERG Jonathan	BAY	80.4	65.4	81.8	66.1	293.7	
31	3	57	SCHARNAGL Till	BAY	65.7	45.1	46.3	62.2	219.3	
		24	713	GOLLWITZER Patrick	BAY					DNS
		35	987	KAMMERER Tobias	BAY					DNS
		43	1078	KÜSTER Jannek	BAY					DNS
		10	254	OSTERMAIER Dennis	BAY					DNS
		25	715	POROD Jonas	BAY					DNS
		19	578	SCZEPONEK Finn	BAY					DNS
		44	1081	WORMSBECHER Adrian	BAY					DNS
		11	347	ZELS Alexander	BAY					DNS

Rank	FP	Bib No	Name	Nat	Series				Total	Remarks
					1	2	3	4		

Protest Date / Time:

Summary

Number of athletes on this list: 39; Total number of athletes: 39

Legend

Bib No Bib Number
Nat Nation

DNS

Did Not Start

FP

Firing Point

73BBE256

Version of 13 JUL 2024, 10:36

I100000IA1307240810.1.LGJ2M.0.001.pdf

67AF

3

Page 2 of 2



OFFICIAL ISSF RESULTS PROVIDER



Guschu Open 2024
RESULTS
LG Junioren II w
Individual
Hochbrück
SAT 13 JUL 2024, START TIME 08:10



Rank	FP	Bib No	Name	Nat	Series				Total	Remarks
					1	2	3	4		
1	63	431	PETTER Arwen	BAY	102.0	102.6	100.7	103.2	408.5	
2	60	252	MEDERER Julia	BAY	100.6	102.6	102.8	101.8	407.8	
3	54	85	WALDENMAYER Lena	BAY	101.2	101.9	102.6	101.3	407.0	
4	52	1	DIEHL Ricarda	BAY	97.7	98.4	98.9	100.1	395.1	
5	64	511	DEUTINGER Antonia	BAY	96.4	98.5	97.4	99.4	391.7	
6	53	84	ERL Isabel	OP	98.5	97.3	98.1	97.3	391.2	
7	67	610	MILLER Veronika	BAY	96.2	96.2	97.3	98.9	388.6	
8	72	714	METER Leonie	BAY	96.6	100.5	93.6	97.1	387.8	
9	65	542	KÖGEL Miriam	BAY	98.6	94.6	99.7	93.1	386.0	
10	58	170	SPERL Anna	OP	95.1	98.1	94.3	97.1	384.6	
11	70	673	WEIßENBÖCK Nadine	BAY	94.5	91.2	100.2	98.2	384.1	
12	57	168	KNOGL Franziska	OP	92.6	97.7	96.2	96.6	383.1	
13	73	786	AELFINGER Franziska	BAY	97.8	95.5	92.0	97.7	383.0	
14	55	105	FRITSCHKE Zoe-Elin	BAY	93.2	95.7	96.3	97.1	382.3	
15	71	681	BAJER Lena	BAY	95.2	97.8	99.2	89.5	381.7	
16	61	375	STEINMETZ Maria	BAY	92.6	99.7	92.1	93.4	377.8	
17	68	623	BIRZELE Nadja	BAY	95.9	95.2	91.5	94.7	377.3	
18	81	985	GRECO Lorena	BAY	94.7	92.9	94.4	93.2	375.2	
19	77	933	REISER Sophia	BAY	92.6	90.0	95.0	95.1	372.7	
20	82	1002	KAIM Clarissa	BAY	91.1	89.6	96.3	93.9	370.9	
21	80	974	BOWAROWSKI Isabell	BAY	93.5	93.6	94.1	89.5	370.7	
22	79	968	BINDER Marina	BAY	90.4	94.8	92.4	92.5	370.1	
23	69	639	WITTCHEN Lea	BAY	92.2	94.3	89.5	93.3	369.3	
24	59	171	WIESER Lena	OP	88.3	91.2	87.8	91.5	358.8	
25	62	380	VIZITHUM Johanna	BAY	89.9	85.7	93.8	89.4	358.8	
26	74	814	LERZER Barbara	BAY	87.8	84.1	92.1	92.7	356.7	
27	78	953	KETT Anna Chiara	BAY	81.8	79.9	76.2	79.8	317.7	
		56	BAUER Anna	BAY						DNS
		66	MADEL Aurelia	BAY						DNS
		75	SITZBERGER Agnes	BAY						DNS
		76	STREIN Marina	BAY						DNS
		79	ZOZULYA Elina	BAY						DNS

Protest Date / Time:

Summary

Number of athletes on this list: 32; Total number of athletes: 32

Legend

Bib No Bib Number DNS Did Not Start FP Firing Point
Nat Nation

E7461F4B

Version of 13 JUL 2024, 10:37

I000000IA1307240810.1.LGJ2W.0.001.pdf

67AF

4

Page 1 of 1



OFFICIAL ISSF RESULTS PROVIDER



Guschu Open 2024
RESULTS
LG Jugend m
Individual
Hochbrück
SAT 13 JUL 2024, START TIME 08:10



Rank	FP	Bib No	Name	Nat	Series				Total	Remarks
					1	2	3	4		
1	35	432	PETTER Joshua	BAY	99.0	99.1	98.8	97.9	394.8	
2	25	1009	BAUER Luca	BAY	96.5	99.0	98.7	99.3	393.5	
3	32	1036	KLOTZ Luca	ITA	99.0	96.3	99.7	97.5	392.5	
4	16	909	KRAUS Jason	WT	93.9	98.8	98.7	97.8	389.2	
5	10	53	BAUER Michael	BAY	99.4	97.1	95.8	95.8	388.1	
6	4	652	GROBBRÜGGE Oskar	BAY	94.0	97.5	97.9	97.8	387.2	
7	13	108	GEBHARD Robin	BAY	94.8	95.4	100.8	96.0	387.0	
8	38	1074	GERLING Artur	BAY	91.4	97.3	91.6	99.1	379.4	
9	41	543	WANNER Alexander	BAY	96.3	93.1	95.3	94.7	379.4	
10	43	593	LATTANZIO Luis	BAY	89.9	91.5	99.5	98.2	379.1	
11	12	782	WESTINGER Lukas	BAY	94.0	97.1	91.8	96.0	378.9	
12	35	1052	SPÖGLER Leon	ITA	96.3	92.3	97.1	92.4	378.1	
13	33	1039	PLATZGUMMER Matthias	ITA	94.1	92.1	96.3	94.9	377.4	
14	14	905	UHLIG Markus	BAY	94.1	95.6	96.3	91.1	377.1	
15	37	444	EGGER Simon	BAY	90.8	93.4	94.4	94.5	373.1	
16	22	163	WEIGERT Lukas	OP	90.1	93.1	94.1	95.5	372.8	
17	22	996	KAPFER David	BAY	95.7	93.3	89.6	93.6	372.2	
18	30	1030	WEIDENAUER David	BAY	92.0	94.7	90.3	94.7	371.7	
19	39	1082	ZISTLER Luca	BAY	93.7	93.2	91.2	92.8	370.9	
20	7	697	WOLFSTEINER Damian	BAY	89.9	92.9	94.9	93.0	370.7	
21	26	1017	FISCHER Leonhard	BAY	82.5	97.1	95.3	95.3	370.2	
22	9	720	VOGELSANG Dominik	BAY	91.4	95.3	91.6	91.3	369.6	
23	8	718	STADLBAUER Lucas	BAY	91.6	89.5	91.7	96.0	368.8	
24	23	164	KRYSCHAK Bastian	OP	96.5	89.1	90.8	91.3	367.7	
25	21	977	ENDTNER Lukas	BAY	100.0	93.1	91.9	82.7	367.7	
26	31	1033	BAUER Matthias	ITA	92.7	96.0	92.5	86.1	367.3	
27	42	563	KIRNER Elias	BAY	95.9	94.5	88.9	86.7	366.0	
28	15	119	SCHWARZ Bastian	WT	89.5	89.2	95.4	91.8	365.9	
29	20	962	BAUMANN Jaron	BAY	89.9	93.1	92.1	90.8	365.9	
30	18	143	WINKLHOFER Linus	BAY	96.8	85.6	93.8	88.1	364.3	
31	30	299	BAUER Johannes	BAY	92.6	92.4	92.3	86.4	363.7	
32	27	240	ZOTT Sebastian	BAY	83.9	95.0	90.7	91.6	361.2	
33	21	154	MÜLLER Leonhard	BAY	93.3	91.8	90.0	86.1	361.2	
34	32	314	BUCK Tobias	BAY	93.6	89.8	88.2	89.1	360.7	
35	9	52	BAUER Sebastian	BAY	89.2	89.2	91.4	90.6	360.4	
36	28	279	ZOGLER Nico	BAY	84.6	87.9	91.6	95.3	359.4	
37	24	165	KRYSCHAK Nicolas	OP	89.5	90.0	87.1	92.5	359.1	
38	6	29	KESSELGRUBER Marc	BAY	89.4	89.0	91.2	86.7	356.3	
39	29	296	JOCHUM Daniel	BAY	85.2	92.9	90.8	83.8	352.7	
40	10	721	SCHUHBAUER Lukas	BAY	87.2	92.5	88.4	83.0	351.1	
41	47	634	ZANGERL Valentin	BAY	82.3	84.7	92.3	89.9	349.2	

Rank	FP	Bib No	Name	Nat	Series				Total	Remarks
					1	2	3	4		
42	36	443	BSCHOR Felix	BAY	80.1	94.0	82.4	91.5	348.0	
43	28	1026	KRAWIEC Sebastian	BAY	89.0	84.6	88.3	86.0	347.9	
44	38	465	GIRSIG Vinzenz	BAY	88.7	83.3	82.0	88.9	342.9	
45	27	876	FEDERLEIN Jonas	BAY	82.6	83.9	83.6	91.7	341.8	
46	25	211	SCHÖNER Fabian	BAY	81.9	88.9	85.1	81.7	337.6	
47	29	1027	SCHLÜTER Leonard	BAY	86.3	85.2	80.0	83.8	335.3	
48	14	113	MAYER Lukas	BAY	81.3	87.2	74.4	86.7	329.6	
49	17	910	SCHWARZKOPF Nick	WT	76.9	81.0	86.5	84.2	328.6	
50	11	66	OTT Elias	BAY	81.6	83.3	77.0	83.8	325.7	
51	33	348	FELLNER Marcel	BAY	76.4	82.3	86.0	78.5	323.2	
52	16	120	BACH Luis	WT	76.4	90.9	68.7	86.0	322.0	
53	19	948	OBINGER Sebastian	BAY	76.5	81.0	76.9	82.5	316.9	
54	2	4	LOSERT-ROTHDACH Julian	BAY	81.2	81.7	72.9	75.8	311.6	
55	3	36	HÖCHST Marcel	BAY	72.3	77.7	81.7	74.0	305.7	
56	12	97	WEIDLER Loris	BAY	83.5	78.0	74.0	68.7	304.2	
57	20	153	WAGNER Jonas	BAY	69.1	80.5	75.9	66.4	291.9	
58	5	19	MANTEL Marlon	BAY	72.1	72.6	68.8	75.6	289.1	
59	46	616	HAIN Simon	BAY	73.9	69.7	67.8	75.9	287.3	
60	6	694	WALDHIER Jonas	BAY	73.5	69.8	67.5	74.9	285.7	
61	44	596	FAHRENSCHON Thomas	BAY	60.6	74.6	69.5	79.7	284.4	
62	31	303	MÜLLER Matteo	BAY	68.9	73.9	71.2	69.4	283.4	
63	2	576	SCHREIBER Melchior	BAY	61.2	68.6	79.8	73.5	283.1	
64	28	877	MEYER Konstantin	BAY	78.1	61.6	69.0	73.5	282.2	
65	18	932	REISER Maximilian	BAY	65.2	85.4	65.2	65.4	281.2	
66	13	791	PRÖPSTER Finn	BAY	77.7	65.0	56.6	77.5	276.8	
67	3	5	NEIDHART Fabian	BAY	68.4	61.3	71.6	67.7	269.0	
68	26	239	SCHERLIES Manuel	BAY	55.4	71.5	72.7	59.1	258.7	
69	4	11	EISGRUBER Florian	BAY	77.5	55.3	58.2	56.5	247.5	
70	19	151	ZELLER Tobias	BAY	60.6	65.9	61.4	57.3	245.2	
71	40	539	HENSCHERL Noah	BAY	64.9	62.6	46.4	65.1	239.0	
72	34	349	VILSMAIER Korbinian	BAY	52.6	63.4	61.3	60.9	238.2	
73	11	763	HELLWIG Lorenz	BAY	55.0	53.3	65.8	52.0	226.1	
	40	1083	GER Paul	BAY						DNS
	23	997	KOTTER Magnus	BAY						DNS
	41	1084	KRIGER Christian	BAY						DNS
	17	125	MADEJA Luca	WT						DNS
	24	1007	MÜLLER Felix	BAY						DNS
	45	603	PFÄFFLE Luca	BAY						DNS
	5	656	PLEISTEINER Maximilian	BAY						DNS
	15	906	SIMBECK Manuel	BAY						DNS
	8	43	STAHL Tobias	BAY						DNS

Protest Date / Time:

Summary

Number of athletes on this list: 82; Total number of athletes: 82

Legend

Bib No Nat Bib Number Nation DNS Did Not Start FP Firing Point

26411F2A



Guschu Open 2024
RESULTS
LG Jugend w
Individual
Hochbrück
SAT 13 JUL 2024, START TIME 08:10



Rank	FP	Bib No	Name	Nat	Series				Total	Remarks
					1	2	3	4		
1	67	504	WEISE Hanna	BR	102.5	98.9	103.1	101.4	405.9	
2	59	148	KRÖNER Linda	BAY	101.2	101.1	101.2	100.7	404.2	
3	57	365	BAYERLEIN Alexandra	BAY	100.5	99.8	101.4	102.1	403.8	
4	79	775	PSCHELINZEV Alina	BAY	103.1	100.0	100.2	100.5	403.8	
5	77	770	BOGNER Nina	BAY	98.0	101.6	102.5	101.4	403.5	
6	60	428	HAUNSPERGER Sarah	BAY	101.3	99.9	102.2	99.6	403.0	
7	37	698	SELLMEIER Sophia	BAY	100.2	98.5	99.4	101.2	399.3	
8	52	25	MCWILLIAMS Maria	BAY	98.2	97.8	103.1	99.2	398.3	
9	76	315	REISER Dalia	BAY	99.8	100.1	99.6	96.1	395.6	
10	43	653	BAUR Annalena	BAY	99.5	99.3	97.3	98.8	394.9	
11	56	1089	PAULA Würfel	BAY	100.7	99.6	96.6	97.9	394.8	
12	68	505	BOßLER Joyce	BR	98.7	98.4	99.5	97.8	394.4	
13	75	313	BUCK Larissa	BAY	96.6	98.5	97.1	100.2	392.4	
14	60	155	SCHMIDT Amina	BAY	97.7	98.8	96.7	99.1	392.3	
15	63	468	MUSCH Leonie	BAY	96.9	98.3	99.0	97.8	392.0	
16	53	332	SCHWEINBERGER Hannah	BAY	97.3	97.8	97.0	99.7	391.8	
17	70	231	WAGNER Elisabeth	BAY	98.1	94.5	99.1	96.9	388.6	
18	72	255	BITTSCH Viktoria	BAY	99.0	94.7	98.6	96.3	388.6	
19	64	175	STOIBER Anna	OP	91.5	97.3	99.1	98.8	386.7	
20	36	674	NAGL Marisa	BAY	97.6	94.2	97.5	97.3	386.6	
21	58	378	HÖLTL Jessica	BAY	100.0	97.3	93.2	96.1	386.6	
22	61	429	STREIT Magdalena	BAY	95.4	96.8	93.7	99.8	385.7	
23	71	594	DUBOIS Dorée	BAY	92.5	96.6	97.2	98.9	385.2	
24	38	699	SPATH Selina	BAY	95.2	91.1	98.6	100.0	384.9	
25	56	118	MÜLLER Hanna	WT	91.6	95.4	97.6	98.1	382.7	
26	59	390	EBERLE Magdalena	BAY	95.8	94.8	96.3	95.1	382.0	
27	35	671	BAJER Bianca	BAY	93.9	96.3	95.0	96.1	381.3	
28	29	982	BADER Annalena	BAY	90.4	96.6	92.9	99.3	379.2	
29	54	1018	TITZ Emma	BAY	94.4	92.4	95.8	95.6	378.2	
30	80	1100	MILLER Jasmin-Julia	BAY	95.1	88.5	97.5	96.3	377.4	
31	71	235	STEINER Julie	BAY	94.4	94.2	96.5	91.7	376.8	
32	55	100	LAAB Alina	BAY	94.3	98.9	91.2	91.7	376.1	
33	78	325	MAYR Pia	BAY	97.7	93.6	91.8	92.4	375.5	
34	48	878	KUCHENBAUR Magdalena	BAY	91.8	96.3	94.2	92.8	375.1	
35	66	213	NITSCHKE Jenny	BAY	93.8	91.9	96.8	92.3	374.8	
36	62	904	JAHNS Emily	BAY	95.3	93.7	90.0	95.5	374.5	
37	30	1092	GEIßLER Caro	BAY	95.9	91.0	95.7	91.7	374.3	
38	63	173	MÜHLBAUER Malena	OP	93.2	98.6	92.8	89.1	373.7	
39	52	592	DÖRFEL Ricarda	BAY	93.4	93.7	92.8	92.4	372.3	
40	56	337	KOOPS Sophie	BAY	90.7	91.6	95.9	93.3	371.5	
41	72	604	BREZGER Lucie	BAY	97.3	89.1	91.3	92.6	370.3	

Rank	FP	Bib No	Name	Nat	Series				Total	Remarks
					1	2	3	4		
42	76	624	BREU Maria	BAY	89.5	90.0	89.0	99.9	368.4	
43	74	614	SCHÖNBECK Maxine	BAY	92.3	94.3	94.8	86.9	368.3	
44	62	172	SPERL Vroni	OP	91.7	93.9	89.0	93.6	368.2	
45	78	771	WEIßFLOG Leonie	BAY	89.8	93.6	93.0	91.8	368.2	
46	52	988	SÜß Sina	BAY	91.9	89.4	94.7	92.1	368.1	
47	66	488	DORIATH Theresa	BAY	97.0	90.6	87.4	91.9	366.9	
48	69	520	ARTMANN Marie	BAY	92.0	87.4	94.5	92.0	365.9	
49	61	161	NOHEIMER Sophia	BAY	95.0	91.1	91.0	88.8	365.9	
50	65	483	PERFLER Clara	BAY	89.1	89.6	94.5	92.1	365.3	
51	70	522	HOCHREIN Theresa	BAY	87.9	88.0	96.8	90.1	362.8	
52	73	278	KREILLER Karlotta	BAY	92.3	95.6	89.1	85.0	362.0	
53	55	336	LAPP Johanna	BAY	86.1	93.6	86.7	86.6	353.0	
54	58	144	OBERMEIER Samira	BAY	86.3	89.0	91.8	85.3	352.4	
55	77	317	ENGELICHT Zoe	BAY	82.4	90.4	90.0	86.9	349.7	
56	67	221	KERNER Marie	BAY	86.9	87.5	82.4	87.7	344.5	
57	34	670	KOHL Jasmin	BAY	85.1	86.6	86.1	81.1	338.9	
58	81	861	WALTHER Johanna	BAY	83.2	81.6	83.0	88.3	336.1	
59	69	223	WECKER Miriam	BAY	82.3	87.9	90.5	74.1	334.8	
60	68	222	MAYERSHOFER Leonie	BAY	84.8	80.7	79.4	83.7	328.6	
61	81	1105	BLESSING Judith	BAY	84.8	80.5	79.8	74.1	319.2	
62	74	302	STROHBACH Sophia Maria	BAY	83.2	79.0	84.0	72.4	318.6	
63	54	335	HERGENRÖDER Lisa	BAY	79.9	77.9	77.8	79.4	315.0	
64	57	951	WEIßMEIER Hannah	BAY	75.5	81.0	70.6	78.2	305.3	
65	82	761	KLOSS Fiona	BAY	80.9	70.3	70.0	72.1	293.3	
66	75	617	ROTH Emilia	BAY	71.3	87.6	67.7	64.3	290.9	
67	47	874	KRAUß Julia	BAY	73.3	79.0	62.7	64.2	279.2	
68	80	728	MAYERHOFER Kathrin	BAY	43.6	44.6	55.6	47.6	191.4	
69	64	470	BRUNNER Annalena	BAY	43.7	46.5	37.2	35.0	162.4	
	57	129	DISTLER Mariella	BAY						DNS
	40	732	ENGLERT Emily	BAY						DNS
	44	850	FERSTL Romy	BAY						DNS
	73	613	MADRID Isabella	BAY						DNS
	65	209	MAIER Anna	BAY						DNS
	79	672	NEUMANN Stella	BAY						DNS
	45	851	PRETZL Charlotte	BAY						DNS
	41	752	STAPPER Lola	BAY						DNS
	53	993	TASCHNER Natalie	BAY						DNS
	54	83	ZAMFIRESAL Cristina	BAY						DNS
	53	55	ZANT Paula	BAY						DNS

Protest Date / Time:

Summary

Number of athletes on this list: 80; Total number of athletes: 80

Legend

Bib No Nat Bib Number Nation DNS Did Not Start FP Firing Point

FA6E716B

Version of 13 JUL 2024, 13:13

I000000IA1307240810.1.LGJW.0.001.pdf

67AF

6

Page 2 of 2



OFFICIAL ISSF RESULTS PROVIDER



Guschu Open 2024
RESULTS
LP Junioren II w
Individual
Hochbrück
SAT 13 JUL 2024, START TIME 08:10



Rank	FP	Bib No	Name	Nat	Series				Total	Remarks
					1	2	3	4		
1	95	1120	GAGOVA Viktoria	BAY	88	92	88	86	354	
2	98	710	FISCHER Greta	BAY	80	75	82	76	313	
3	96	58	KRAUS Stephania	BAY	73	73	79	74	299	
		97	RACKESEDER Laura	BAY						DNS
		99	SCHABERT Samira	BAY						DNS

Protest Date / Time:

Summary

Number of athletes on this list: 5; Total number of athletes: 5

Legend

Bib No Bib Number
Nat Nation

DNS

Did Not Start

FP

Firing Point

7D486A9A

Version of 13 JUL 2024, 10:26

I000000IA1307240810.1.LPJ2W.0.001.pdf

67AF

14

Page 1 of 1



OFFICIAL ISSF RESULTS PROVIDER



Guschu Open 2024
RESULTS
LP Jugend m
Individual
Hochbrück
SAT 13 JUL 2024, START TIME 08:10



Rank	FP	Bib No	Name	Nat	Series				Total	Remarks
					1	2	3	4		
1	87	680	NEUMANN Finn	BAY	93	92	93	92	370	
2	94	1119	DANN Darius	BAY	89	92	87	92	360	
3	97	50	WAFÄ Osama	BAY	86	81	94	86	347	
4	98	372	KOLTER Lars	BAY	82	90	89	86	347	
5	91	366	SIPPL Florian	BAY	90	83	86	87	346	
6	92	956	TAMRAZYAN Moses	BAY	82	83	88	85	338	
7	95	35	HÜNERBEIN Bastian	BAY	82	85	88	82	337	
8	89	739	KIRCHER Felix	BAY	81	84	85	84	334	
9	86	651	GRUBER Finn	BAY	83	89	85	77	334	
10	94	34	KRASNIQI Dardan	BAY	85	82	80	83	330	
11	88	707	STAUDHAMMER Michael	BAY	87	76	84	74	321	
12	96	37	ORTNER Benedikt	BAY	81	89	81	68	319	
13	86	179	RIß Kilian	OP	83	84	74	77	318	
14	85	178	PATER Tobias	OP	81	76	76	83	316	
15	94	453	BRANDMAIER Andreas	BAY	83	73	71	87	314	
16	88	271	HAGEN Jonas	BAY	79	77	72	84	312	
17	90	818	BERGRATH Lasse	BAY	67	73	79	85	304	
18	92	28	HÖLZL Leon	BAY	81	75	68	72	296	
19	85	641	BUKOWSKI David	BAY	73	71	74	70	288	
20	91	864	STOCKINGER Lukas	BAY	75	75	70	57	277	
21	93	541	FRANK Dominic	BAY	50	27	40	51	168	
22	89	280	BACHMAIER Christian	BAY	46	55	28	38	167	
		93	994	DEMHARTER Benedikt	BAY					DNS
		90	292	GUBA Maximilian Quirin	BAY					DNS
		87	249	MEYER Andreas	BAY					DNS

Protest Date / Time:

Summary

Number of athletes on this list: 25; Total number of athletes: 25

Legend

Bib No Bib Number DNS Did Not Start FP Firing Point
Nat Nation

F8E37E6C

Version of 13 JUL 2024, 13:13

I100000IA1307240810.1.LPJM.0.001.pdf

67AF

15

Page 1 of 1



OFFICIAL ISSF RESULTS PROVIDER



Guschu Open 2024
RESULTS
LP Jugend w
Individual
Hochbrück
SAT 13 JUL 2024, START TIME 08:10



Rank	FP	Bib No	Name	Nat	Series				Total	Remarks
					1	2	3	4		
1	90	1115	DIMITROVA Ema	BAY	91	93	90	90	364	
2	96	326	ARZBERGER Veronika	BAY	89	87	89	83	348	
3	93	1118	KRUMOVA Katerina	BAY	83	88	86	90	347	
4	98	709	FISCHER Marta	BAY	87	88	87	85	347	
5	91	1116	WAYAND Nele	BAY	84	82	88	90	344	
6	97	181	HOFMANN Lena	OP	81	87	89	84	341	
7	92	1117	HOFELE Julia	BAY	82	76	83	83	324	
8	99	912	ENGLERT Yara	WT	76	69	71	62	278	

Protest Date / Time:

Summary

Number of athletes on this list: 8; Total number of athletes: 8

Legend

Bib No Bib Number

FP Firing Point

Nat

Nation

4E9AA9BF

Version of 13 JUL 2024, 11:50

I000000IA1307240810.1.LPJW.0.001.pdf

67AF

16

Page 1 of 1



OFFICIAL ISSF RESULTS PROVIDER



Guschu Open 2024
RESULTS
LP Schüler A m
Individual
Hochbrück
SAT 13 JUL 2024, START TIME 13:50



Rank	FP	Bib No	Name	Nat	Series		Total	Remarks
					1	2		
1	89	706	PARNET Maurice	BAY	85	90	175	
2	87	289	WINTERBOER Peer Niklas	BAY	91	84	175	
3	89	509	HAY Julius	BAY	88	80	168	
4	88	439	JAECKEL Moritz	BAY	85	71	156	
5	86	49	HENSCHER Finn	BAY	73	80	153	
6	90	544	WANNER Martin	BAY	77	74	151	
7	91	554	STIFNER Martin	BAY	74	72	146	
8	85	217	NITSCHKE Jan	BAY	66	78	144	
9	85	682	RATBERGER Thomas	BAY	62	72	134	
10	90	866	KIERMEIER Florian	BAY	70	61	131	
11	87	59	ANDÖRFER Nico	BAY	73	56	129	
12	92	606	WENNI Lukas	BAY	62	63	125	
13	89	112	SAUTER Jonas	BAY	41	64	105	
14	86	272	ZAGEL Tristan	BAY	57	40	97	
15	87	685	CASCINO Alessio	BAY	52	43	95	
16	92	691	BEER Max	BAY	47	46	93	
17	88	68	KÖNIG Fabian	BAY	32	21	53	
	90	831	GRUND Eliah	BAY				DNS
	85	979	KIRMAIER Manuel	BAY				DNS
	86	684	KUMMER Fabian	BAY				DNS

Protest Date / Time:

Summary

Number of athletes on this list: 20; Total number of athletes: 20

Legend

Bib No Bib Number DNS Did Not Start FP Firing Point
Nat Nation

121FDD1B

Version of 13 JUL 2024, 16:18

I100000IA1307241350.1.LPSAM.0.001.pdf

67AF 17

Page 1 of 1



OFFICIAL ISSF RESULTS PROVIDER



Guschu Open 2024
RESULTS
LP Schüler A w
Individual
Hochbrück
SAT 13 JUL 2024, START TIME 13:50



Rank	FP	Bib No	Name	Nat	Series		Total	Remarks
					1	2		
1	96	620	BÄUMLER Laura	BAY	81	89	170	
2	93	1110	STRÄHLE Greta	WT	83	79	162	
3	99	830	LECHERMANN Leonie	BAY	80	81	161	
4	94	195	DIERTL Anna-Katharina	OP	73	87	160	
5	98	257	HONCHARENKO Anhelina	BAY	82	73	155	
6	97	180	SAUER Anja	OP	70	81	151	
7	95	508	SCHLAHSA Caroline	BAY	72	73	145	
8	96	104	BRUCKNER Anna	BAY	75	64	139	
9	95	44	ZINKA Malin	BAY	57	68	125	
10	97	716	HACKENSPIEL Lia	BAY	64	61	125	
11	98	793	ECKSTEIN Hanna	BAY	62	42	104	
	99	435	GREIMEL Eva	BAY				DNS

Protest Date / Time:

Summary

Number of athletes on this list: 12; Total number of athletes: 12

Legend

Bib No Bib Number
Nat Nation

DNS

Did Not Start

FP

Firing Point

E593C35B

Version of 13 JUL 2024, 16:30

I000000IA1307241350.1.LPSAW.0.001.pdf

67AF

18

Page 1 of 1



OFFICIAL ISSF RESULTS PROVIDER



Guschu Open 2024
RESULTS
LP Schüler B m
Individual
Hochbrück
SAT 13 JUL 2024, START TIME 16:00



Rank	FP	Bib No	Name	Nat	Series		Total	Remarks
					1	2		
1	85	1093	NIßLEIN Moritz	OP	85	79	164	
2	94	744	HECKEL Justus	BAY	76	82	158	
3	85	146	OSTERHOLZER Josef	BAY	75	81	156	
4	86	832	WÖHRL Moritz	BAY	72	81	153	
5	87	833	BERGER Felix	BAY	70	70	140	
6	89	837	JÖRG Jakob	BAY	78	62	140	
7	88	145	DOPPELHAMMER Sebastian	BAY	71	66	137	
8	95	1043	MAYR Tobias	ITA	67	68	135	
9	91	371	FETZER Jakob	BAY	66	68	134	
10	91	880	BARTSCHAT Quirin	BAY	63	69	132	
11	91	860	NAUMANN Felix	BAY	53	74	127	
12	92	387	KLOIBER Felix	BAY	65	53	118	
13	86	41	OBERMEIER Simon	BAY	53	58	111	
14	89	816	HÖPFEL Max	BAY	55	52	107	
15	90	359	HALBRITTER Benjamin	BAY	62	43	105	
16	90	854	SCHREIER Leonard	BAY	46	50	96	
17	87	64	GANTZ Jonas	BAY	37	56	93	
18	93	683	PEJIC Rafael	BAY	39	42	81	
19	97	1113	SADEWASSER Lenny	BAY	43	34	77	
20	93	945	KRAZ Maximilian	BAY	42	29	71	
	88	836	KELLNER Leo	BAY				DNS

Protest Date / Time:

Summary

Number of athletes on this list: 21; Total number of athletes: 21

Legend

Bib No Bib Number DNS Did Not Start FP Firing Point
Nat Nation

786732AA

Version of 13 JUL 2024, 18:28

I1000001A1307241600.1.LPSBM.0.001.pdf

67AF

19

Page 1 of 1



OFFICIAL ISSF RESULTS PROVIDER



Guschu Open 2024
RESULTS
LP Schüler B w
Individual
Hochbrück
SAT 13 JUL 2024, START TIME 16:00



Rank	FP	Bib No	Name	Nat	Series		Total	Remarks
					1	2		
1	99	835	PADOVAN Cristina	BAY	93	85	178	
2	98	290	BLANK Elfie	BAY	73	78	151	
3	97	288	PEREZ Mia Leonie	BAY	82	69	151	
4	95	708	FISCHER Lotta	BAY	72	76	148	
5	99	40	ORTNER Johanna	BAY	79	69	148	
6	98	834	LECHERMANN Pia	BAY	62	84	146	
7	98	24	GRÜNDONNER Josephine	BAY	70	75	145	
8	96	711	MAIER Antonia	BAY	56	66	122	
9	96	90	KUPFER Lisa	BAY	55	62	117	
10	97	747	RHAME Louise	BAY	51	53	104	

Protest Date / Time:

Summary

Number of athletes on this list: 10; Total number of athletes: 10

Legend

64C31296

Bib No	Bib Number	FP	Firing Point	Nat	Nation
Version of 13 JUL 2024, 18:33			I0000001A1307241600.1.LPSBW.0.001.pdf	67AF	20

Page 1 of 1



OFFICIAL ISSF RESULTS PROVIDER



Guschu Open 2024
RESULTS
LG Schüler A m
Individual
Hochbrück
SAT 13 JUL 2024, START TIME 13:50



Rank	FP	Bib No	Name	Nat	Series		Total	Remarks
					1	2		
1	31	765	GIEßWEIN Tim	BAY	102.1	101.2	203.3	
2	35	436	OTTER Andreas	BAY	100.7	101.2	201.9	
3	35	783	BERSCHNEIDER Johann	BAY	98.5	99.7	198.2	
4	9	81	SCHARNAGL Gabriel	BAY	99.1	98.8	197.9	
5	22	1044	HINTNER Jakob Paul	ITA	97.6	98.9	196.5	
6	16	176	WOLF Amadeus	OP	97.5	94.7	192.2	
7	45	893	HORNAUER Niklas	BAY	95.9	96.2	192.1	
8	19	1038	PIAZZI Jakob	ITA	94.0	97.4	191.4	
9	15	1015	BLÖSCH Paul	BAY	94.1	97.1	191.2	
10	25	1053	NIEDERMAIR Alex	ITA	96.6	94.1	190.7	
11	19	214	GILLE Max	BAY	93.5	96.2	189.7	
12	26	1054	TAPPEINER Leonard	ITA	98.3	91.2	189.5	
13	16	1016	FEEß Luis	BAY	93.9	93.5	187.4	
14	20	1040	TRÖGER Jan	ITA	94.0	92.2	186.2	
15	49	497	BAATZ Lucas	BR	93.4	92.1	185.5	
16	14	158	SCHMIDT Aaron	BAY	93.7	91.7	185.4	
17	32	776	PSCHELINZEV Tim	BAY	94.4	90.8	185.2	
18	5	551	ECKARDT Nico	BAY	88.5	94.5	183.0	
19	29	757	MÖHRLE Kevin	BAY	88.5	94.0	182.5	
20	23	237	HATSCHER Carlos	BAY	92.5	89.5	182.0	
21	47	916	HABERSTOCK Johannes	BAY	91.6	90.2	181.8	
22	8	963	FEISTLE Leevin	BAY	92.8	89.0	181.8	
23	13	115	GROß Lias	BAY	93.6	84.2	177.8	
24	3	534	BERGLER Tobias	BAY	87.3	89.9	177.2	
25	17	1028	TSCHERU Constantin	BAY	86.7	90.4	177.1	
26	22	232	WAGNER Florian	BAY	83.1	93.7	176.8	
27	24	244	RÖDER Timo	BAY	89.0	87.2	176.2	
28	8	71	KAISER Ben	BAY	86.7	88.3	175.0	
29	43	481	BÖNIG Maximilian	BAY	91.0	83.9	174.9	
30	27	490	SCHUSTER Tobias	BAY	81.9	92.4	174.3	
31	44	447	EGGER Lukas	BAY	87.5	86.5	174.0	
32	44	482	LANGREITER Simon	BAY	86.9	86.8	173.7	
33	36	873	FECH Lukas	BAY	83.6	89.8	173.4	
34	32	364	BAYERLEIN Sebastian	BAY	85.2	88.1	173.3	
35	30	327	FABIAN Späth	BAY	87.6	85.4	173.0	
36	11	101	GREINER Leopold	BAY	90.3	80.4	170.7	
37	16	600	DEMHARTER Jonas	BAY	87.0	82.0	169.0	
38	8	556	FRITSCH Loris	BAY	84.5	84.4	168.9	
39	46	903	KROLL Alessio	BAY	82.8	85.6	168.4	
40	7	555	WIRTH Maximilian	BAY	82.2	86.1	168.3	
41	18	1031	BAUER Hannes	ITA	84.7	83.4	168.1	

Rank	FP	Bib No	Name	Nat	Series		Total	Remarks
					1	2		
42	12	110	TRIPS Felix	BAY	85.7	80.7	166.4	
43	6	552	HERDZIN Phillip	BAY	81.0	84.5	165.5	
44	21	633	SANDBICHLER Maxi	BAY	79.9	85.0	164.9	
45	26	274	KREILLER Korbinian	BAY	87.5	77.1	164.6	
46	42	867	SCHMIEDEK Simon	BAY	75.8	86.1	161.9	
47	7	955	THALHAUSER Michael	BAY	81.3	79.9	161.2	
48	40	852	LUGERT Toni	BAY	93.5	66.8	160.3	
49	29	321	GÜTTER Oskar	BAY	84.1	74.8	158.9	
50	13	585	VON VOGT Simon	BAY	81.1	77.7	158.8	
51	10	574	SCHWEIGER Fabian	BAY	80.8	76.2	157.0	
52	37	790	FRIES Samuel	BAY	81.5	75.5	157.0	
53	39	829	GÜNTHER Noah	BAY	78.9	77.3	156.2	
54	42	479	RITZINGER Sebastian	BAY	84.0	72.1	156.1	
55	6	954	LECHERMANN Simon	BAY	74.7	80.9	155.6	
56	14	1014	SCHÜRR Philipp	BAY	79.0	74.0	153.0	
57	15	162	GIECE Konrad	BAY	65.1	85.4	150.5	
58	31	1065	TSCHOLL Alex	ITA	73.2	73.6	146.8	
59	29	1062	RUNGG Tobias	ITA	78.5	67.7	146.2	
60	2	926	FRANKE Konstantin	BAY	74.2	70.5	144.7	
61	2	15	KAMMERLOHER Martin	BAY	64.5	78.7	143.2	
62	33	780	METSCHL Johannes	BAY	78.6	63.5	142.1	
63	18	602	LAUMER Jannik	BAY	81.4	60.0	141.4	
64	6	69	KÖNIG Julian	BAY	64.9	76.2	141.1	
65	12	1003	RUPP Paul	BAY	68.0	71.7	139.7	
66	27	304	RAU Maximilian	BAY	71.9	67.3	139.2	
67	30	494	LAUFER Lukas	BAY	63.9	73.4	137.3	
68	3	194	HENSEL Noah	OP	62.3	70.8	133.1	
69	17	601	EPPLE Paul	BAY	72.0	60.1	132.1	
70	49	923	HABERMANN Felix	BAY	51.6	79.9	131.5	
71	4	949	OBINGER Georg	BAY	69.5	60.2	129.7	
72	31	362	BLISSE Marian	BAY	69.5	58.6	128.1	
73	15	590	DÖRFEL Phillipp	BAY	61.3	66.2	127.5	
74	33	381	BRÄUNLEIN Pierre	BAY	68.9	58.2	127.1	
75	13	1013	RUPPERT Max	BAY	69.5	56.8	126.3	
76	10	92	PLONNER Sebastian	BAY	67.6	58.2	125.8	
77	10	967	WEINGART Jonas	BAY	62.9	62.7	125.6	
78	5	950	WEIßMEIER Vinzenz	BAY	67.1	58.4	125.5	
79	25	686	KORNBLUM Kilian	BAY	70.0	55.5	125.5	
80	30	762	KLOSS Constantin	BAY	59.4	65.7	125.1	
81	4	537	V. MINNIGERODE Vincent	BAY	58.4	62.1	120.5	
82	14	589	HAUSER Vincent	BAY	57.3	61.2	118.5	
83	45	487	LANGREITER Sebastian	BAY	61.8	54.5	116.3	
84	26	722	SCHUHBAUER Dominik	BAY	57.1	58.3	115.4	
85	28	493	SEIDL Luca	BAY	60.0	53.9	113.9	
86	11	583	WITTKOPF Philip	BAY	57.2	54.3	111.5	
87	18	202	MAIER Hannes	BAY	57.1	53.6	110.7	
88	37	879	MAYER Enrico	BAY	46.2	60.9	107.1	
89	5	65	WENDE Phillip	BAY	52.6	47.5	100.1	
90	43	446	BSCHOR Johannes	BAY	42.8	45.8	88.6	

Rank	FP	Bib No	Name	Nat	Series		Total	Remarks
					1	2		
91	4	63	BERGMANN Maximilian	BAY	35.2	45.6	80.8	
92	41	859	WOLLNITZKE Simon	BAY	41.9	36.3	78.2	
93	34	414	SCHWEGLER Florian	BAY	34.3	40.8	75.1	
94	28	746	MAYER Christian	BAY	34.3	31.1	65.4	
95	21	229	DERAGISCH Florian	BAY	35.7	26.6	62.3	
96	28	319	JAKOB Laurenz	BAY	13.6	23.0	36.6	
	39	454	ATTENBERGER Simon	BAY				DNS
	27	729	BANAI Shabir	BAY				DNS
	11	973	BINDER Fabian	BAY				DNS
	19	630	BORBELY Paul	BAY				DNS
	40	455	BRANDMAIER Sebastian	BAY				DNS
	36	787	FEUERER Lasse	BAY				DNS
	38	792	FRISCH Emil	BAY				DNS
	25	269	GAMMISCH Alessandro	BAY				DNS
	17	177	GROß Kilian	OP				DNS
	41	456	HÄNSSLER Lukas	BAY				DNS
	32	1071	HAPPACH Lukas	BAY				DNS
	34	1077	KUEPACH Felix von	BAY				DNS
	34	781	LANG Lukas	BAY				DNS
	20	632	MAHLER Maximilian	BAY				DNS
	48	917	NEUDECKER Vincent	BAY				DNS
	38	452	OBER Simon	BAY				DNS
	7	70	PROTSCHKY Lukas	BAY				DNS
	9	562	RECHT Kevin	BAY				DNS
	33	1072	SCHAAL Severin	BAY				DNS
	35	1080	SCHINDLBECK Maximilian	BAY				DNS
	12	584	SEDLMEIR Florian	BAY				DNS
	9	965	ZOCHER Oliver	BAY				DNS
	20	216	ZUBOV Michael	BAY				DNS

Protest Date / Time:

Summary

Number of athletes on this list: 119; Total number of athletes: 119

Legend

Bib No Nat Bib Number Nation DNS Did Not Start FP Firing Point

A0FB5955

Version of 13 JUL 2024, 16:28

I1000001A1307241350.1.LGSAM.0.001.pdf

67AF

7

Page 3 of 3



OFFICIAL ISSF RESULTS PROVIDER



Guschu Open 2024
RESULTS
LG Schüler A w
Individual
Hochbrück
SAT 13 JUL 2024, START TIME 13:50



Rank	FP	Bib No	Name	Nat	Series		Total	Remarks
					1	2		
1	65	495	KANZLER Elea Johanna	BR	102.8	101.0	203.8	
2	56	1075	GERLING Veronika	BAY	101.8	101.1	202.9	
3	40	1055	GÖTSCH Miriam	ITA	99.7	102.6	202.3	
4	67	514	SCHUHBÄCK Magdalena	BAY	100.0	100.4	200.4	
5	79	324	ENGSTLE Franziska	BAY	101.8	98.1	199.9	
6	66	496	BERGMANN Nele	BR	100.2	99.0	199.2	
7	53	26	MCWILLIAMS Flora	BAY	98.2	100.3	198.5	
8	81	498	WAASK Nora	BR	98.5	99.6	198.1	
9	38	1012	RUPPERT Emma	BAY	98.3	99.4	197.7	
10	80	980	LEDERER Leonie	BAY	101.8	95.0	196.8	
11	69	523	KÜNZLER Emma	BAY	100.2	96.3	196.5	
12	58	433	PETTER Emilia	BAY	98.1	97.8	195.9	
13	68	521	HOCHREIN Eva	BAY	98.7	96.5	195.2	
14	53	992	KOMOREK Vanessa	BAY	95.9	98.8	194.7	
15	70	524	WENGER Franziska	BAY	99.2	95.1	194.3	
16	42	1063	SANTER Samia	ITA	101.0	93.0	194.0	
17	63	696	SELLMEIER Katharina	BAY	98.0	94.1	192.1	
18	48	895	FISCHER Lara	BAY	91.4	100.0	191.4	
19	74	277	BRESSNER Svenja	BAY	98.5	92.8	191.3	
20	78	333	BRETTEL Lilly	BAY	97.6	93.3	190.9	
21	55	373	SCHMUTTERMAIR Linda	BAY	94.2	96.1	190.3	
22	69	236	GRUNZ Isabella	BAY	95.5	94.7	190.2	
23	39	1025	JEROUSCHEK Annika	BAY	94.9	95.0	189.9	
24	70	238	ZOTT Julia	BAY	95.2	93.7	188.9	
25	56	95	WURM Johanna	BAY	93.1	95.0	188.1	
26	81	981	LEDERER Finja	BAY	90.8	97.1	187.9	
27	57	99	RIEDEL Emma	BAY	88.1	99.3	187.4	
28	79	865	STOCKINGER Marie	BAY	94.8	92.4	187.2	
29	59	445	MÜLLER Simona	BAY	93.2	93.9	187.1	
30	52	990	GOLDMANN Lena	BAY	93.1	93.9	187.0	
31	58	640	ROEDER Maria	BAY	93.6	93.0	186.6	
32	67	212	WINDFELDER Jana	BAY	93.7	91.4	185.1	
33	82	983	ALBRECHT Lea	BAY	94.8	90.2	185.0	
34	73	779	GÖTZ Nina	BAY	88.9	95.8	184.7	
35	72	273	LANG Lea	BAY	97.5	86.5	184.0	
36	67	719	SEISENBERGER Elena	BAY	91.2	92.6	183.8	
37	58	106	BEER Samira	BAY	94.5	88.2	182.7	
38	59	650	PIELKE Gesa	BAY	87.9	94.1	182.0	
39	63	149	KRÖNER Emma	BAY	89.7	91.1	180.8	
40	71	525	POETZSCH Leonie	BAY	90.2	90.2	180.4	
41	54	38	SYDOW Emilia	BAY	88.2	91.9	180.1	

Rank	FP	Bib No	Name	Nat	Series		Total	Remarks
					1	2		
42	61	872	FECH Anna	BAY	90.0	89.9	179.9	
43	52	595	DUBOIS Denise	BAY	88.3	91.5	179.8	
44	73	275	BACHMAIER Magdalena	BAY	90.1	89.7	179.8	
45	54	618	TRAXLER Franziska	BAY	86.2	93.3	179.5	
46	57	430	HIMMELSTOß Sabrina	BAY	84.3	94.9	179.2	
47	47	894	KARL Lena	BAY	90.7	88.5	179.2	
48	64	484	UNTERMAIERHOFER Hanna	BAY	88.6	90.2	178.8	
49	75	295	IDZI Wiktorja	BAY	91.0	87.6	178.6	
50	59	122	RAUCH Finja	BAY	92.3	86.2	178.5	
51	72	773	ZELLER Nora	BAY	89.2	87.3	176.5	
52	75	788	SEIß Melanie	BAY	91.5	83.9	175.4	
53	77	300	STANGLMAIR Josefine	BAY	85.9	89.2	175.1	
54	77	827	DORBERTH Vanessa	BAY	89.5	85.6	175.1	
55	82	1091	FRIES Lucille	BAY	83.0	91.9	174.9	
56	71	340	ZELL Finja	BAY	87.9	86.7	174.6	
57	71	768	ENDRES Lara	BAY	82.1	91.7	173.8	
58	66	204	BEßLER Lara	BAY	82.6	90.1	172.7	
59	53	605	BREZGER Laura	BAY	82.8	89.3	172.1	
60	43	128	FUCHS Lena	BAY	84.9	87.2	172.1	
61	56	391	KERLING Emilia	BAY	86.3	85.8	172.1	
62	62	466	GIRSIG Emma	BAY	82.8	89.2	172.0	
63	61	464	BETZ Lara	BAY	89.3	82.5	171.8	
64	57	637	HERTLEIN Katharina	BAY	89.0	80.8	169.8	
65	54	363	KRACUN Michelle	BAY	82.0	87.3	169.3	
66	65	169	ESCHL Sarah	OP	78.7	90.4	169.1	
67	65	703	GERLE Mia	BAY	82.7	86.0	168.7	
68	80	915	BIERINGER Fiona	BAY	87.3	80.6	167.9	
69	45	856	DEWAELE Lotta	BAY	88.4	79.0	167.4	
70	76	564	BURGER Johanna	BAY	83.5	82.9	166.4	
71	55	74	WAGNER Emma	BAY	84.9	81.0	165.9	
72	64	702	KÜHNEL Sophia	BAY	86.9	78.1	165.0	
73	62	875	KRAUß Isabel	BAY	75.1	89.6	164.7	
74	76	297	MOTZA Leoni	BAY	77.8	86.9	164.7	
75	52	2	FÜRST Leonie	BAY	76.5	85.2	161.7	
76	44	130	MUBARRIZ Aylin	BAY	75.9	81.1	157.0	
77	82	1103	PASTSCHENKO Anna	BAY	77.4	79.5	156.9	
78	77	565	HUBER Stella	BAY	81.6	73.1	154.7	
79	66	704	FREI Theresa	BAY	81.1	73.0	154.1	
80	64	167	LICHTENWALD Monja	OP	74.1	79.5	153.6	
81	80	142	RAMMELBERGER Leni	BAY	79.1	74.4	153.5	
82	72	540	FRANK Sophia	BAY	73.6	77.6	151.2	
83	78	839	GÜRTNER Magdalena	BAY	74.8	72.6	147.4	
84	52	305	MÜLLER Magdalena	BAY	71.2	73.4	144.6	
85	79	621	GUGGENBERGER Alicia	BAY	69.0	75.2	144.2	
86	78	575	ZIEGLER Melanie	BAY	72.4	65.6	138.0	
87	60	457	BACKER Hannah	BAY	66.8	68.4	135.2	
88	76	789	FERSCH Mira	BAY	71.6	60.7	132.3	
89	74	784	ZÖBERLEIN Magdalena	BAY	61.9	69.5	131.4	
90	46	858	ZENTGRAF Emily	BAY	61.1	66.7	127.8	

Rank	FP	Bib No	Name	Nat	Series		Total	Remarks
					1	2		
91	63	471	BLEY Sonja	BAY	47.9	57.7	105.6	
92	70	749	SCHULZE Johanna	BAY	45.3	54.7	100.0	
93	56	636	HELFER Sina	BAY	33.2	22.6	55.8	
	49	902	ANETSBERGER Magdalena	BAY				DNS
	60	124	DÜRR Lisa	WT				DNS
	57	1076	HOFFMANN Marlene	BAY				DNS
	81	922	HUBER Sophie	BAY				DNS
	59	1086	LANDGRAF Celin	BAY				DNS
	75	561	MAYR Lena	BAY				DNS
	68	733	MILLEDER Laura	BAY				DNS
	55	631	PETER Chiara	BAY				DNS
	69	734	PISTNER Selina	BAY				DNS
	58	1079	POLACHOWSKI Mia Sophie	BAY				DNS
	53	245	SANDER Julia	BAY				DNS
	68	224	ZIEGELDORF Lilly	BAY				DNS

Protest Date / Time:

Summary

Number of athletes on this list: 105; Total number of athletes: 105

Legend

Bib No Bib Number DNS Did Not Start FP Firing Point

Nat Nation

4EB3C19A

Version of 13 JUL 2024, 17:24

I000000IA1307241350.1.LGSAW.0.001.pdf

67AF

8

Page 3 of 3



OFFICIAL ISSF RESULTS PROVIDER



Guschu Open 2024
RESULTS
LG Schüler B m
Individual
Hochbrück
SAT 13 JUL 2024, START TIME 16:00



Rank	FP	Bib No	Name	Nat	Series		Total	Remarks
					1	2		
1	29	413	VEHE Tim	BAY	99.0	98.5	197.5	
2	8	778	BERSCHNEIDER Anton	BAY	96.0	92.1	188.1	
3	2	701	GUGGENMOOS Kilian	BAY	92.9	92.6	185.5	
4	26	1073	ANDROIC Alen	BAY	88.3	96.1	184.4	
5	35	502	ROSIN Henri	BR	89.3	92.3	181.6	
6	22	320	SÖLLNER Arthur	BAY	83.9	96.1	180.0	
7	39	538	REICHERT Jannik	BAY	92.2	86.2	178.4	
8	7	777	HOLLWECK Emil	BAY	94.2	81.8	176.0	
9	19	969	FRÖHLICH Julian	BAY	86.9	88.9	175.8	
10	20	975	KEMPE Finn	BAY	83.1	92.4	175.5	
11	27	361	BRANNER Jonah	BAY	81.0	94.4	175.4	
12	20	901	JASZCZUK Bartlomiej	BAY	88.9	86.4	175.3	
13	21	978	LINZ Robin	BAY	87.2	86.2	173.4	
14	27	23	REUTHER Louis	BAY	90.2	82.8	173.0	
15	26	360	SEYBERTH Raphael	BAY	89.8	77.9	167.7	
16	3	10	SCHRANNER Simon	BAY	84.5	81.7	166.2	
17	23	1032	BAUER Lukas	BAY	79.6	86.5	166.1	
18	21	899	TALLAFUSS Yannik	BAY	85.8	79.0	164.8	
19	9	815	BETZ Matthias	BAY	83.8	75.1	158.9	
20	10	103	MERKL Marius	BAY	73.6	84.0	157.6	
21	13	215	BECK Michael	BAY	80.3	76.6	156.9	
22	15	227	PROBST Quirin	BAY	78.5	76.6	155.1	
23	5	17	POPP Raphael	BAY	81.2	72.5	153.7	
24	22	1022	HERTZ Moritz	BAY	74.0	77.5	151.5	
25	18	248	IVANOV Oleksii	BAY	73.5	72.4	145.9	
26	43	580	KOPP Louis	BAY	70.6	73.4	144.0	
27	7	51	BAUER Raphael	BAY	80.0	62.9	142.9	
28	24	1037	KLOTZ Mattia	BAY	72.4	69.9	142.3	
29	10	823	KIRCHNER Rico	BAY	63.2	78.2	141.4	
30	5	767	ENDRES Lukas	BAY	78.8	60.0	138.8	
31	11	828	VAN LANNEN Henry	BAY	71.5	66.8	138.3	
32	44	581	BEEWART Moritz	BAY	70.0	64.9	134.9	
33	23	1107	RUNGG Felix	ITA	71.8	59.0	130.8	
34	16	234	GRAF Benedikt	BAY	67.9	61.0	128.9	
35	11	123	ALBRECHT Benedikt	WT	64.7	60.2	124.9	
36	37	513	RÄDER Maximilian	BAY	61.0	62.9	123.9	
37	42	579	WETTING Simon	BAY	66.4	57.2	123.6	
38	33	451	MAYER Luis	BAY	60.7	59.6	120.3	
39	48	591	DÖRFEL Roman	BAY	47.1	71.0	118.1	
40	46	587	KLINGL Valentin	BAY	59.1	56.2	115.3	
41	34	462	WITTMANN Sebastian	BAY	58.7	55.8	114.5	

Rank	FP	Bib No	Name	Nat	Series		Total	Remarks
					1	2		
42	9	76	ZITTERBART Aaron	BAY	59.0	53.5	112.5	
43	14	857	DEWAELE Hannes	BAY	58.9	49.7	108.6	
44	12	131	GOSCH Manuel	BAY	50.4	57.1	107.5	
45	8	67	SCHÜBEL Moritz	BAY	45.3	60.5	105.8	
46	12	844	MAYR Robert	BAY	54.0	51.0	105.0	
47	25	358	ROTHMER Lukas	BAY	51.6	51.7	103.3	
48	24	341	KALTOFEN Matteo	BAY	44.4	50.2	94.6	
49	31	438	HERBST Moritz	BAY	46.6	42.9	89.5	
50	41	573	SCHWEIGER Felix	BAY	25.1	62.1	87.2	
51	36	512	BICHLER Thomas	BAY	44.0	38.2	82.2	
52	6	774	HÄRTEIS Jakob	BAY	56.4	25.3	81.7	
53	23	339	MEIR Jannik	BAY	42.1	35.6	77.7	
54	2	7	WICKE Jakob	BAY	34.0	37.6	71.6	
55	3	745	MAYER Matthias	BAY	30.9	35.6	66.5	
56	49	1124	KÜSPERT Felix	BAY	27.8	38.3	66.1	
57	32	448	GAUGLER Simon	BAY	26.8	27.2	54.0	
58	13	855	GLAß Moritz	BAY	21.6	18.9	40.5	
59	4	16	EISGRUBER Andreas	BAY	8.0	13.1	21.1	
		30	426	BERGMEIER Jakob	BAY			DNS
		17	243	DÖPNER Leon	BAY			DNS
		14	226	FISCHERAUER Felix	BAY			DNS
		18	914	HABERSTOCK Andreas	BAY			DNS
		47	588	KLINGL Mortiz	BAY			DNS
		45	582	RENNER Fabian	BAY			DNS
		40	572	SCHWEIGER Louis	BAY			DNS
		6	27	STENDEL Michael	BAY			DNS
		4	758	WÄRL Mathias	BAY			DNS
		28	370	WEBER Florian	BAY			DNS
		19	250	WERWEIN Michael	BAY			DNS
		16	900	ZARNARDO Anton	BAY			DNS

Protest Date / Time:

Summary

Number of athletes on this list: 71; Total number of athletes: 71

Legend

Bib No Nat Bib Number Nation DNS Did Not Start FP Firing Point

98A05160

Version of 13 JUL 2024, 18:36

I1000001A1307241600.1.LGSBM.0.001.pdf

67AF

9

Page 2 of 2



OFFICIAL ISSF RESULTS PROVIDER



Guschu Open 2024
RESULTS
LG Schüler B w
Individual
Hochbrück
SAT 13 JUL 2024, START TIME 16:00



Rank	FP	Bib No	Name	Nat	Series		Total	Remarks
					1	2		
1	72	499	SCHULZE Emilia	BR	102.6	101.8	204.4	
2	73	500	ASMUSSEN Alea	BR	99.4	101.9	201.3	
3	72	111	EPPLE Miriam	BAY	94.7	99.5	194.2	
4	75	22	GRÜNDONNER Mia-Sophie	BAY	97.9	96.1	194.0	
5	82	822	DEBATIN Marleen	BAY	97.8	95.6	193.4	
6	74	501	BAATZ Larissa	BR	95.3	96.9	192.2	
7	62	379	HÖLTL Melanie	BAY	94.0	98.1	192.1	
8	75	503	FUNKE Emma Lynn	BR	93.6	97.5	191.1	
9	41	740	SPILLNER Marina	BAY	96.7	93.4	190.1	
10	33	675	SPIEGEL Valentina	BAY	92.9	94.9	187.8	
11	63	888	WIDMAYR Louisa	BAY	93.8	94.0	187.8	
12	56	267	GRÜNWALD Lotte	BAY	93.9	92.7	186.6	
13	70	77	PREISINGER Finja	BAY	95.7	90.3	186.0	
14	77	553	WEBER Annalena	BAY	91.2	94.5	185.7	
15	25	890	GABEL Leonie	BAY	91.1	94.4	185.5	
16	57	268	GRÜNWALD Emmi	BAY	94.1	90.7	184.8	
17	81	535	WÜHR Maximiliane	BAY	92.2	92.3	184.5	
18	34	677	HANKE Lenja	BAY	90.8	90.1	180.9	
19	71	887	THIEMIG Marie	BAY	89.9	90.9	180.8	
20	80	991	LORENZ Viktoria	BAY	92.8	87.0	179.8	
21	68	21	KIEßLING Franziska	BAY	90.4	87.7	178.1	
22	64	412	VEHE Mia	BAY	91.3	84.9	176.2	
23	49	853	LUGERT Emma	BAY	89.2	86.7	175.9	
24	71	102	GREINER Diana	BAY	85.6	89.6	175.2	
25	37	688	GAWLIK Emilia	BAY	89.9	84.7	174.6	
26	54	265	WIESMETH Madlen	BAY	83.1	91.0	174.1	
27	60	712	MAIER Carolina	BAY	84.5	88.6	173.1	
28	79	976	MAIER Marina	BAY	84.3	87.8	172.1	
29	52	262	ROHDE Allegra	BAY	86.7	85.1	171.8	
30	63	389	EBERLE Laura Sophia	BAY	87.9	82.8	170.7	
31	58	270	KAMCZYCK Alena	BAY	86.2	82.9	169.1	
32	36	687	GAWLIK Jasmin	BAY	78.5	90.5	169.0	
33	69	39	SCHILL Anna-Lena	BAY	81.9	87.1	169.0	
34	59	316	BÖHM Franziska	BAY	84.3	84.1	168.4	
35	78	298	BAUER Franziska	BAY	82.4	84.5	166.9	
36	67	421	REICH Emily	BAY	82.5	84.3	166.8	
37	65	892	STOCKER Maria	BAY	84.1	81.6	165.7	
38	96	1087	BAYER Lisa	BAY	77.7	87.5	165.2	
39	65	416	STEINHARDT Marie	BAY	84.2	76.9	161.1	
40	80	820	WERNER Carlotta	BAY	80.5	79.5	160.0	
41	43	766	GRASRUCK Anna	BAY	77.4	81.0	158.4	

Rank	FP	Bib No	Name	Nat	Series		Total	Remarks
					1	2		
42	46	246	KUCHLER Leyla	BAY	84.3	74.1	158.4	
43	31	608	GLEIXNER Veronika	BAY	70.5	87.5	158.0	
44	53	264	SCHUSTER Vanessa	BAY	81.0	76.0	157.0	
45	73	114	RABUS Minou	BAY	73.2	80.7	153.9	
46	60	318	ENGELICHT Abby	BAY	78.9	73.1	152.0	
47	68	440	KÖSTNER Emma	BAY	79.2	69.3	148.5	
48	76	840	GÜRTNER Katharina - Ottilie	BAY	74.8	71.4	146.2	
49	61	330	KUGELMANN Sophie	BAY	75.9	68.9	144.8	
50	81	1029	TSCHERU Magdalena	BAY	65.4	77.9	143.3	
51	62	1097	GÜRTNER Leonie	BAY	74.3	68.3	142.6	
52	32	609	LYTVYNOVA Kateryna	BAY	72.4	67.6	140.0	
53	55	266	DREßEL Monja	BAY	67.2	71.3	138.5	
54	30	607	WENNI Sophia	BAY	66.4	70.1	136.5	
55	64	1099	STRAßER Anna	BAY	63.7	69.8	133.5	
56	47	247	DRECHSLER Lilly	BAY	67.4	64.8	132.2	
57	77	841	MÜLLER Marlene	BAY	65.5	64.9	130.4	
58	79	306	REGAU Katharina	BAY	71.4	55.3	126.7	
59	67	14	KAMMERLOHER Katharina	BAY	64.4	58.7	123.1	
60	69	449	EGGER Mathilda	BAY	40.6	76.5	117.1	
61	48	913	BRANONER Mia-Lina	BAY	58.9	57.3	116.2	
62	66	13	KREITENWEIS Lena	BAY	50.9	56.7	107.6	
63	78	571	SKALITZKI Coco	BAY	48.0	57.5	105.5	
64	42	760	SCHNEIDMADL Angelina	BAY	47.3	44.0	91.3	
65	37	723	BARSAN Ana Monica	BAY	40.4	28.1	68.5	
66	66	420	BIRKMEIR Nora	BAY	32.2	31.0	63.2	
	61	881	BRATZLER Finnja	BAY				DNS
	60	1104	FINK Alexandra	BAY				DNS
	44	772	GRAF Laura	BAY				DNS
	45	785	HABERLER Josefine	BAY				DNS
	74	127	MÄRZ Anna	BAY				DNS
	28	586	SEDLMEIR Louisa	BAY				DNS
	38	692	STURM Anna	BAY				DNS
	35	679	THEISS Laura	BAY				DNS

Protest Date / Time:

Summary

Number of athletes on this list: 74; Total number of athletes: 74

Legend

Bib No Nat Bib Number Nation DNS Did Not Start FP Firing Point

70B8E2F8

Version of 13 JUL 2024, 18:38

I0000001A1307241600.1.LGSBW.0.001.pdf

67AF

10

Page 2 of 2



OFFICIAL ISSF RESULTS PROVIDER



Guschu Open 2024
RESULTS
LP Junioren I m
Individual
Hochbrück
SAT 13 JUL 2024, START TIME 08:10



Rank	FP	Bib No	Name	Nat	Series				Total	Remarks
					1	2	3	4		
1	86	56	DOBLER Erik	BAY	84	85	92	91	352	
2	89	1090	NIEDERMEIER Lukas	BAY	82	88	85	83	338	
3	88	995	EGGER Tobias	BAY	84	83	82	87	336	
4	85	32	BUCHEN Maurice	BAY	86	87	79	76	328	
5	87	241	SCHERLIES Fabian	BAY	60	77	77	78	292	

Protest Date / Time:

Summary

Number of athletes on this list: 5; Total number of athletes: 5

Legend

5B20A766

Bib No Bib Number

FP Firing Point

Nat

Nation

Version of 13 JUL 2024, 09:11

I100000IA1307240810.1.LPJ1M.0.001.pdf

67AF

11

Page 1 of 1



OFFICIAL ISSF RESULTS PROVIDER



Guschu Open 2024
RESULTS
LP Junioren I w
Individual
Hochbrück
SAT 13 JUL 2024, START TIME 08:10



Rank	FP	Bib No	Name	Nat	Series				Total	Remarks
					1	2	3	4		
1	98	80	SCHÄFFLER Lisa	BAY	89	86	86	86	347	
2	96	1114	REINELT Sophie	WT	84	81	86	90	341	
3	97	33	HÖCHST Sarah-Michelle	BAY	78	77	80	73	308	
4	99	291	GUBA Johanna-Sophie	BAY	84	83	66	70	303	

Protest Date / Time:

Summary

Number of athletes on this list: 4; Total number of athletes: 4

Legend

59FC5828

Bib No Bib Number

FP Firing Point

Nat

Nation

Version of 13 JUL 2024, 09:11

I000000IA1307240810.1.LPJ1W.0.001.pdf

67AF

12

Page 1 of 1



OFFICIAL ISSF RESULTS PROVIDER



Guschu Open 2024
RESULTS
LP Junioren II m
Individual
Hochbrück
SAT 13 JUL 2024, START TIME 09:35



Rank	FP	Bib No	Name	Nat	Series				Total	Remarks
					1	2	3	4		
1	89	369	BIEDERMANN Andreas	BAY	87	88	85	83	343	
2	88	367	SCHMIDTNER Bastian	BAY	82	83	73	82	320	
3	86	156	ALTSTIDL Nikolai	BAY	78	78	77	80	313	
4	91	986	BLENDER Jonas	BAY	70	77	79	76	302	
5	90	635	ZOSSEDER Simon	BAY	75	77	75	73	300	
6	92	1109	SCHNEIDER Julian	BAY	39	37	52	68	196	
		85	126	KESSLER Till	WT					DNS
		87	251	WERWEIN Alex	BAY					DNS

Protest Date / Time:

Summary

Number of athletes on this list: 8; Total number of athletes: 8

Legend

Bib No Bib Number DNS Did Not Start FP Firing Point
Nat Nation

707607DD

Version of 13 JUL 2024, 10:31

I100000IA1307240935.1.LPJ2M.0.001.pdf

67AF

13

Page 1 of 1



OFFICIAL ISSF RESULTS PROVIDER

BAYERISCHE SPORTSCHÜTZENJUGEND

Guschu Open

Bogenschießen WA720

Hochbrück, 13. Juli 2024



Recurve Schüler A - Spo Kennziffer: 6.10.20

Start_Nr	Jahrg.	Name	Verein	Land	40m	40m	10'/X'	Total
1.	12A	2011 Schedlbauer, Ivo	Bogenschützen Regental	OP	62	290	3/1	352
2.	13D	2010 Pfeffer, Theresa	FT Jahn Landsberg	BY	58	290	4/2	348
3.	14C	2011 Grüner, Klara	SG 1549 Tirschenreuth	BY	57	273	2/1	330
4.	12B	2010 Kroher, Magdalena	D`Speckbachpelzer Michelfeld	OP	56	260	3/0	316
5.	13A	2011 Gradl, Lisa	Diana Hirschau	OP	38	256	2/0	294
6.	13C	2010 Zinner, Anna-Philina	D`Speckbachpelzer Michelfeld	OP	13	90	0/0	103

Recurve Schüler B - Spo Kennziffer: 6.10.22

Start_Nr	Jahrg.	Name	Verein	Land	25m	25m	10'/X'	Total
1.	7B	2012 Kennon, Savannah	ASV Buchenbühl e.V.	BY	52	343	28/1	395
2.	11C	2012 Lachnit, Leonie	Diana Hirschau	OP	62	277	3/1	339
3.	11B	2012 Knorr, Leni	Diana Hirschau	OP	33	242	3/0	275
4.	9D	2012 Vazquez, Naomi	Diana Hirschau	OP	36	230	3/0	266
5.	11D	2013 Kroher, Max	D`Speckbachpelzer Michelfeld	OP	32	168	1/0	200
6.	11A	2013 Hoth, David	D`Speckbachpelzer Michelfeld	OP	19	165	1/1	184

Recurve Schüler C - Spo Kennziffer: 6.10.24

Start_Nr	Jahrg.	Name	Verein	Land	18m	18m	10'/X'	Total
1.	2D	2014 Scherz, Sebastian	SV Hubertus Poing	BY	64	312	7/4	376
2.	3D	2014 Ladiges, Sophia	ASV Buchenbühl e.V.	BY	62	294	6/0	356
3.	3C	2014 Kießling, Sebastian	SG Stadtsteinach	BY	60	289	3/1	349
4.	1B	2015 Fichtner, Marina	ASV Buchenbühl e.V.	BY	53	289	2/0	342
5.	1D	2014 Scherz, Maximilian	SV Hubertus Poing	BY	60	271	1/0	331
6.	1A	2016 Hoth, Noah	D`Speckbachpelzer Michelfeld	OP	50	244	1/0	294
7.	2A	2016 Augustin, Jasmin	Diana Hirschau	OP	40	239	3/2	279
8.	1C	2014 Berg, Victoria	ESV München-Freimann e.V.	BY	27	212	0/0	239
9.	2C	2014 Wetzels, Palina	ESV München-Freimann e.V.	BY	37	184	1/0	221
10.	3A	2018 Markert, Armin	Diana Hirschau	OP	23	134	0/0	157
11.	3B	2014 Wagoun, Simon	SV Scheyern 1862 e.V.	BY	20	96	0/0	116
12.	2B	2016 Uekötter, Otto	SV Scheyern 1862 e.V.	BY		94	1/0	94

Recurve Jugend - Spo Kennziffer: 6.10.30

Start_Nr	Jahrg.	Name	Verein	Land	60m	60m	10'/X'	Total
1.	17B	2009 Hobmeier, Silas	ASV Buchenbühl e.V.	BY	51	241	1/1	292
2.	17A	2009 Kroher, Leo	D`Speckbachpelzer Michelfeld	OP	49	242	4/2	291
3.	16C	2009 Kellner, Lukas	Diana Hirschau	OP	46	230	2/0	276
4.	17D	2009 Höfer, Leon	SV Hubertus Poing	BY	48	228	2/0	276
5.	17C	2009 Bippus, Fabian	FT Jahn Landsberg	BY	40	186	1/0	226
6.	16D	2009 Kusch, Leon	ASV Buchenbühl e.V.	BY	38	179	2/1	217
7.	16B	2009 Geiger, Raphael	SC-U Germering	BY	11	117	2/0	128

Compound Schüler - Spo Kennziffer: 6.15.20

Start_Nr	Jahrg.	Name	Verein	Land	40m	40m	10'/X'	Total
1.	14A	2012 Sims, Payton	Diana Hirschau	OP	65	307	9/0	372

BAYERISCHE SPORTSCHÜTZENJUGEND

Guschu Open

Bogenschießen WA720

Hochbrück, 13. Juli 2024



Blankbogen Schüler - Spo Kennziffer: 6.16.20

Start_Nr	Jahrg.	Name	Verein	Land	25m	25m	10'/X'	Total
1.	10C	2011 Riedmann, Marlon	SV Hubertus Poing	BY	46	236	2/0	282
2.	9B	2010 Schieber, Gabriel	SG Stadtsteinach	BY	40	236	0/0	276
3.	7D	2011 Wagoun, Roman	SV Scheyern 1862 e.V.	BY	28	201	1/0	229
4.	7A	2012 Kurt, Kian	Bogenschützen Fürth e.V.	BY	24	181	1/0	205
5.	8B	2010 von Hennings, Luisa	SG Lochhausen	BY	32	158	1/0	190
6.	10B	2014 Ziegeldorf, Lenny	SV Aschberg Aislingen	BY	10	75	0/0	85
7.	7C	2015 Pabst, Celin Ayleen	SV drei Linden Zusmarshausen	BY	2	16	0/0	18
8.	9C	2014 Wirth, Sofia	SV drei Linden Zusmarshausen	BY	2		0/0	2

Schüler A Einsteiger - Spo Kennziffer: 6.10.20

Start_Nr	Jahrg.	Name	Verein	Land	18m	18m	10'/X'	Total
1.	6D	2010 Walther, Alex	SC-U Germering	BY	52	285	5/2	337
2.	6B	2011 Müller, Maximilian	ESV München-Freimann e.V.	BY	30	231	1/0	261
3.	6C	2011 Jund, Johanna	SG Krautgarten 1953 e.V.	BY	44	181	1/1	225
4.	5D	2011 Schwendemann, Noah	SC-U Germering	BY	34	174	2/1	208
5.	5C	2010 Sesselmann, Julia	SG Stadtsteinach	BY	24	178	3/0	202
6.	5B	2010 Uekötter, Paulina	SV Scheyern 1862 e.V.	BY		159	1/1	159

Schüler B Einsteiger - Spo Kennziffer: 6.10.22

Start_Nr	Jahrg.	Name	Verein	Land	18m	18m	10'/X'	Total
1.	4D	2013 Stahl, Benjamin	SV Hubertus Poing	BY	50	290	7/3	340
2.	4B	2012 Szajkoova, Kylie	Kaiserburgschützen	BY	41	223	4/1	264
3.	4C	2013 Jund, Franziska	SG Krautgarten 1953 e.V.	BY	38	202	2/0	240



Mannschaftsergebnis Recurve

1. ASV Buchebühl	BY	7B	Kennon, Savannah	395	1093
		3D	Ladiges, Sophia	356	
		1B	Fichtner, Marina	342	
2. SV Hubertus Poing	BY	2D	Scherz, Sebastian	376	1047
		4D	Stahl, Benjamin	340	
		1D	Scherz, Maximilian	331	
3. Diana Hirschau	OP	11C	Lachnit, Leonie	339	912
		13A	Gradl, Lisa	294	
		2A	Augustin, Jasmin	279	
4. D`Speckbachpelzer Michelfeld	OP	12B	Kroher, Magdalena	316	901
		1A	Hoth, Noah	294	
		17A	Kroher, Leo	291	
5. ESV München Freimann	BY	6B	Müller, Maximilian	261	721
		1C	Berg, Victoria	239	
		2C	Wetzel, Palina	221	
6. SC-U Germering	BY	6D	Walther, Alex	337	673
		5D	Schwendemann, Noah	208	
		16B	Geiger, Raphael	128	
7. SV Scheyern 1862 e.V.	BY	5B	Uekötter, Paulina	159	369
		3B	Wagoun, Simon	116	
		2B	Uekötter, Otto	94	



Guschu-Light Lichtgewehr Schüler I m

13.07.2024

Platz	Passnr.	Name	Verein	Serien		Gesamt	Bem.
1 .	197	SPINDLER Florian	OSB	101.1	100.1	201.2	
2 .	78	MÜLLER Alexander	Bayern	98.1	97.4	195.5	
3 .	187	WEIDINGER Mika	OSB	96.9	97.3	194.2	
4 .	192	BERGER Julian	OSB	92.2	94.7	186.9	
5 .	346	MILDENBERGER Ilian	Bayern	90.1	95.3	185.4	
6 .	491	WIESINGER Jakob	Bayern	90.5	93.5	184.0	
7 .	193	PENTZKOFER Kristian	OSB	93.9	87.5	181.4	
8 .	396	BADHORN Alexander	Bayern	85.3	95.9	181.2	
9 .	200	HORN Emil	Bayern	92.1	87.1	179.2	
10 .	972	BINDER Jonas	Bayern	85.7	93.4	179.1	
11 .	1042	SCHWINGSHACKL Michael	Südtirol	86.3	91.8	178.1	
12 .	797	SOFFA Thorben	Bayern	84.0	93.4	177.4	
13 .	160	RAUSCHEN Jonas	Bayern	89.1	87.5	176.6	
14 .	159	RAUSCHEN Kilian	Bayern	82.8	87.9	170.7	
15 .	920	MAYER Valentin	Bayern	84.5	85.2	169.7	
16 .	1004	RUPP Tobias	Bayern	83.5	84.5	168.0	
17 .	896	KÜBELSBECK Raphael	Bayern	84.3	83.7	168.0	
18 .	533	BERGLER Andreas	Bayern	83.8	81.2	165.0	
19 .	422	LINDERMAYR Ben	Bayern	72.9	92.0	164.9	
20 .	87	ARTMANN Niklas	Bayern	81.2	83.3	164.5	
21 .	1094	NISSLEIN Tim	OSB	81.9	81.6	163.5	
22 .	516	MÜLLER Johannes	Bayern	82.4	81.1	163.5	
23 .	532	HAMMER Bastian	Bayern	76.4	86.4	162.8	
24 .	937	FÖRST Moritz	Bayern	85.3	77.5	162.8	
25 .	282	BAUMGARTNER Lorenz	Bayern	78.1	84.1	162.2	
26 .	485	UNTERMAIERHOFER Leonhard	Bayern	81.9	79.8	161.7	
27 .	796	STAHL Vincent	Bayern	79.4	81.1	160.5	
28 .	1010	BAUER Jannis	Bayern	79.4	79.8	159.2	
29 .	425	ARTNER Jonas	Bayern	81.8	77.3	159.1	
30 .	91	KUPFER Felix	Bayern	79.2	79.1	158.3	
31 .	478	PERFLER Tim	Bayern	77.2	80.8	158.0	
32 .	847	FRITZ Luca	Bayern	81.2	76.3	157.5	
33 .	356	BRAUN Hannes	Bayern	78.4	78.1	156.5	
34 .	693	WINTER Felix	Bayern	75.6	80.5	156.1	
35 .	355	KRACUN Marko	Bayern	80.9	73.4	154.3	
36 .	705	SCHÄFERS Leon	Bayern	80.0	74.0	154.0	
37 .	30	SMARSLIK Daniel	Bayern	75.1	78.7	153.8	
38 .	307	WEISS Laurin	Bayern	71.4	80.8	152.2	
39 .	417	STEINHERR Simon	Bayern	69.8	82.0	151.8	
40 .	808	HOFMANN Luis	Bayern	76.2	75.4	151.6	

41 .	921	SCHAMPER Luis	Bayern	74.3	76.8	151.1	
42 .	1021	STEIGER Elias	Bayern	75.2	75.9	151.1	
43 .	385	RIGOLE Sebastian	Bayern	76.3	74.8	151.1	
44 .	107	BEER Elias	Bayern	71.7	79.3	151.0	
45 .	530	SCHNEIDER Konstantin	Bayern	69.7	78.8	148.5	
46 .	477	WINKLER Clemens	Bayern	81.7	66.7	148.4	
47 .	219	JAKAB Maté	Bayern	72.4	75.3	147.7	
48 .	135	PLATTNER Leo	Bayern	80.5	67.2	147.7	
49 .	689	GERSTENBERG Paul	Bayern	74.2	73.4	147.6	
50 .	638	HERTLEIN Alexander	Bayern	71.0	76.3	147.3	
51 .	198	KRAUS Anton	Bayern	75.2	71.8	147.0	
52 .	826	FUCHS Valentin	Bayern	71.0	74.9	145.9	
53 .	188	BURKHARDT Eric	OSB	73.8	72.0	145.8	
54 .	423	LESTI Simon	Bayern	80.0	64.4	144.4	
55 .	489	GROB Thomas	Bayern	71.1	72.9	144.0	
56 .	418	SCHIESSL Philipp	Bayern	72.1	69.8	141.9	
57 .	261	RÖHNER Bastian	Bayern	70.8	69.9	140.7	
58 .	424	ARTNER Tobias	Bayern	58.6	81.8	140.4	
59 .	312	REGAU Jakob	Bayern	66.6	72.0	138.6	
60 .	287	RIEPERTINGER Hannes	Bayern	69.2	69.4	138.6	
61 .	427	STELZER Alexander	Bayern	71.4	66.2	137.6	
62 .	809	KÖNIG Valentin	Bayern	67.0	68.5	135.5	
63 .	404	FRICKE Kilian	Bayern	76.2	58.3	134.5	
64 .	870	WAGNER Philipp	Bayern	64.1	68.0	132.1	
65 .	748	RHAME John	Bayern	66.5	65.5	132.0	
66 .	450	EGGER Jakob	Bayern	75.0	56.5	131.5	
67 .	804	KAHL Erik	Bayern	68.1	62.8	130.9	
68 .	473	BRANDMÜLLER Jakob	Bayern	68.8	61.8	130.6	
69 .	283	GASTL Anton	Bayern	57.1	73.0	130.1	
70 .	61	LÖFFLER-SCHUBERT Joel-Jamal	Bayern	66.1	63.7	129.8	
71 .	868	HASLBECK Anton	Bayern	49.4	79.8	129.2	
72 .	476	BACHHUBER Luis	Bayern	65.1	62.8	127.9	
73 .	507	STANGNER Mattis	Bayern	59.1	67.9	127.0	
74 .	845	GIRRBACH Moritz	Bayern	62.1	64.2	126.3	
75 .	800	MÜLLER Ryan	Bayern	56.6	68.0	124.6	
76 .	377	ZIEGLER Johannes	Bayern	63.8	60.6	124.4	
77 .	408	MAY Moritz	Bayern	60.0	63.3	123.3	
78 .	1011	WANDAM Paul	Bayern	59.4	62.5	121.9	
79 .	400	BLAIMER Korbinian	Bayern	63.2	57.9	121.1	
80 .	322	MARLON Graf	Bayern	54.8	66.2	121.0	
81 .	93	ANGERMEIER Raphael	Bayern	56.7	62.1	118.8	
82 .	931	NOVAK Merlin	Bayern	41.6	74.2	115.8	
83 .	228	PROBST Ludwig	Bayern	50.7	62.5	113.2	
84 .	260	GRUBER Lukas	Bayern	56.6	54.3	110.9	
85 .	286	MAISCH Felix	Bayern	63.8	46.2	110.0	
86 .	647	BERGNER Julian	Bayern	51.0	56.7	107.7	
87 .	116	FEREKIDIS Cesare	Bayern	51.8	54.6	106.4	

88 .	810	KNEISSL Johannes	Bayern	48.6	52.8	101.4	
89 .	82	FÜHRLICH Jan	Bayern	47.8	52.6	100.4	
90 .	139	RAMMELBERGER Julius	Bayern	44.0	54.6	98.6	
91 .		RENNER Fabian	Bayern	39.9	57.0	96.9	
92 .	190	ADLHOCH Michael	OSB	43.3	47.7	91.0	
93 .	311	NIEDERLE Joel	Bayern	50.0	39.7	89.7	
94 .	411	UMSCHADEN Paul	Bayern	42.3	33.6	75.9	
NA	225	PÖPPL Leo	Bayern			-	-
NA	329	BERGER Lukas	Bayern			-	-
NA	354	WEBER Lukas	Bayern			-	-
NA	345	SCHNEIDER Soraya	Bayern			-	-
NA	751	ZEIGERMANN Mark	Bayern			-	-
NA	891	BREITSAMETER Paul	Bayern			-	-
NA	943	RENNER Tobias	Bayern			-	-
NA	469	MUMINOVIC Malik	Bayern			-	-



Guschu-Light Lichtgewehr Schüler I w

13.07.2024

Platz	Passnr.	Name	Verein	Serien		Gesamt	Bem.
1.	557	HAGL Lena-Marie	Bayern	92.8	92.4	185.2	
2.	196	HENSEL Amelie	OSB	96.2	88.3	184.5	
3.	930	LIPS Greta	Bayern	94.1	90.2	184.3	
4.	743	HECKEL Zara	Bayern	90.3	92.0	182.3	
5.	419	KÖLBL Johanna	Bayern	89.0	92.9	181.9	
6.	186	LICHTENWALD Romy	OSB	92.3	87.1	179.4	
7.	138	OBERMEIER Xenia	Bayern	88.3	90.1	178.4	
8.	946	AIGNER Josefine	Bayern	86.2	90.6	176.8	
9.	1101	MILLER Laura	Bayern	86.9	89.8	176.7	
10.	134	ROTHBAUER Paula	Bayern	86.6	89.1	175.7	
11.	121	BACH Emelie	WSV	86.1	89.0	175.1	
12.	42	BREITENBACH Milena	Bayern	89.8	84.1	173.9	
13.	518	OSTERMAIER Elisa	Bayern	82.5	89.9	172.4	
14.	88	ULRICH Julia	Bayern	88.6	82.9	171.5	
15.	1088	BAYER Teressa	Bayern	83.6	87.3	170.9	
16.	547	HASIC Elisa	Bayern	85.3	85.4	170.7	
17.	1000	DEMHARTER Loni	Bayern	90.2	79.5	169.7	
18.	515	SCHUHBÄCK Raphaela	Bayern	83.1	86.1	169.2	
19.	94	WURM Magdalena	Bayern	79.0 M	88.4 M	167.4	
20.	742	KICK Franka	Bayern	73.9	93.4	167.3	
21.	259	HUIHUI Helena	Bayern	86.5	77.3	163.8	
22.	936	KODALLE Johanna	Bayern	87.7	75.6	163.3	
23.	517	FÄRBER Amelie	Bayern	75.6	81.4	157.0	
24.	3	HEIDEMANN Sara	Bayern	76.6	79.8	156.4	
25.	137	STRASSER Julia	Bayern	81.7	73.1	154.8	
26.	285	JUST Sara	Bayern	75.2	79.2	154.4	
27.	799	ECKSTEIN Leonie	Bayern	72.2	81.9	154.1	
28.	947	THALHAUSER Antonia	Bayern	81.5	72.6	154.1	
29.	309	WAGNER Louisa	Bayern	75.2	76.5	151.7	
30.	536	KREUZER Lilia	Bayern	74.7	76.5	151.2	
31.	308	WEGE Hannah	Bayern	76.0	74.3	150.3	
32.	383	MULINSKI Julia	Bayern	71.8	77.7	149.5	
33.	560	BAYER Helene	Bayern	72.8	76.7	149.5	
34.	898	EICHWALD Dominika	Bayern	67.2	81.0	148.2	
35.	1019	JEROUSCHEK Julia	Bayern	73.1	74.7	147.8	
36.	927	FRANKE Astrid	Bayern	69.8	77.4	147.2	
37.	1006	GERHARDS Marie	Bayern	76.9	70.1	147.0	
38.	207	VOLK Sofia	Bayern	69.5	76.9	146.4	
39.	569	ZIEGLER Monika	Bayern	66.2	79.5	145.7	

40 .	550	BENEDEK Valentina	Bayern	74.0	71.4	145.4	
41 .	805	RENNER Sophia	Bayern	75.6	69.7	145.3	
42 .	1098	KAMMERMEIER Viktoria	Bayern	68.8	76.2	145.0	
43 .	570	HARTMANN Alaara	Bayern	77.6	65.9	143.5	
44 .	869	HASLBECK Diana	Bayern	67.3	75.9	143.2	
45 .	806	SODERER Fiona	Bayern	74.1	68.5	142.6	
46 .	795	GIESSWEIN Jasmin	Bayern	63.7	77.4	141.1	
47 .	998	LEUKEFELD Isabella	Bayern	80.4	60.6	141.0	
48 .	395	ZELLNER Emily	Bayern	67.5	70.8	138.3	
49 .	218	ESER Mirijam	Bayern	65.6	69.7	135.3	
50 .	185	GERHARDT Manuela	OSB	75.3	60.0	135.3	
51 .	531	SCHNEIDER Laura	Bayern	59.2	75.1	134.3	
52 .	759	SPIES Larissa	Bayern	65.7	67.2	132.9	
53 .	323	HANNA Popfinger	Bayern	57.6	73.0	130.6	
54 .	889	GABEL Anna-Lena	Bayern	65.1	65.4	130.5	
55 .	750	SCHULZE Magdalena	Bayern	62.4	67.5	129.9	
56 .	203	KRAUS Johanna	Bayern	69.9	58.9	128.8	
57 .	393	MEGYESI Anna	Bayern	65.2	63.2	128.4	
58 .	415	SCHWEGLER Sophia	Bayern	63.4	63.7	127.1	
59 .	939	KARL Marie	Bayern	71.0	55.9	126.9	
60 .	293	MARTIN Melina	Bayern	62.8	63.4	126.2	
61 .	406	HACK Charlotte	Bayern	55.2	70.8	126.0	
62 .	717	STADLBAUER Sophia	Bayern	61.9	58.6	120.5	
63 .	310	ENGEL Elina	Bayern	69.9	46.2	116.1	
64 .	1108	REINHARDT Johanna	Bayern	63.1	51.4	114.5	
65 .	1102	PASTSCHENKO Paula	Bayern	55.3	58.1	113.4	
66 .	474	MOSER Theresa	Bayern	66.6	46.8	113.4	
67 .	208	STARK Anna	Bayern	54.5	54.9	109.4	
68 .	559	FRITSCH Luisa	Bayern	54.8	49.9	104.7	
69 .	96	SCHRÖCK Helena	Bayern	44.9	48.9	93.8	
70 .	18	WIESHEU Luzie	Bayern	54.7	36.8	91.5	
71 .	798	SCHÜTZ Victoria	Bayern	42.0	44.0	86.0	
72 .	549	BENEDEK Florentine	Bayern	41.5	41.1	82.6	
73 .	724	BARSAN Stefanie	Bayern	39.3	32.6	71.9	
74 .	284	HALLER Anna	Bayern	18.6	19.7	38.3	
NA	535	WÜHR Maximiliane	Bayern			-	-
NA	558	WIRTH Katharina	Bayern			-	-
NA	191	KOLLER Sina	OSB			-	-
NA	357	BARASINSKA Oliwia	Bayern			-	-

M - Schüsse wurden editiert!

Ausdruck vom: 14.07.2024 19:41:17 - DISAG OpticScoreServer



Guschu-Light Lichtgewehr Schüler II m

13.07.2024

Platz	Passnr.	Name	Verein	Serien		Gesamt	Bem.
1.	970	MARVAN Karim	Bayern	95.3	93.2	188.5	
2.	966	OTT Leonhard	Bayern	91.2	83.0	174.2	
3.	434	PETTER Sam	Bayern	85.9	80.8	166.7	
4.	871	FRÖDE Max	Bayern	79.9	86.0	165.9	
5.	205	SCHILLER Paul	Bayern	77.6	81.2	158.8	
6.	132	WINKLHOFER Laurenz	Bayern	68.6	85.4	154.0	
7.	352	WIERL Johannes	Bayern	82.1	70.0	152.1	
8.	183	SEFT Jakob	OSB	81.6	69.0	150.6	
9.	825	KLETTNER Robin	Bayern	77.9	72.6	150.5	
10.	73	MÜLLER Anton	Bayern	76.8	72.0	148.8	
11.	189	ROIDL Timo	OSB	74.0	73.9	147.9	
12.	47	ZEIGERMANN Oskar	Bayern	74.2	73.2	147.4	
13.	480	ANGERER Timo	Bayern	68.3	77.2	145.5	
14.	409	SEITZ Johannes	Bayern	65.1	78.6	143.7	
15.	459	WEINDLER Lukas	Bayern	69.6	74.1	143.7	
16.	12	FISCHER Lukas	Bayern	70.7	72.1	142.8	
17.	846	STRAUCH Felix	Bayern	67.0	70.6	137.6	
18.	644	ROEDER Lorenz	Bayern	62.5	75.0	137.5	
19.	726	FREIBERGER Stefan	Bayern	67.3	68.9	136.2	
20.	472	BLEY Karl	Bayern	67.1	66.3	133.4	
21.	353	BLISSE Henry	Bayern	59.7	72.5	132.2	
22.	886	THIEMIG Julian	Bayern	66.1	63.6	129.7	
23.	1001	DEMHARTER Armin	Bayern	76.5	51.2	127.7	
24.	206	KRAUS Philipp	Bayern	64.7	59.0	123.7	
25.	384	LANDFRIED Tobias	Bayern	74.9	43.4	118.3	
26.	811	FUNKE Sascha	Bayern	48.8	62.8	111.6	
27.	807	MAYER Luca	Bayern	59.2	51.2	110.4	
28.	392	KERLING Elias	Bayern	56.3	52.7	109.0	
29.	401	BRUMMER Leon	Bayern	53.5	55.4	108.9	
30.	351	BRAUN Jonas	Bayern	55.0	52.0	107.0	
31.	843	SEITZ Louis	Bayern	53.9	52.9	106.8	
32.	281	BACHMAIER Leonhard	Bayern	58.3	47.7	106.0	
33.	62	HABERZETT Michael	Bayern	52.4	53.2	105.6	
34.	386	LI Bohan	Bayern	63.5 M	35.4 M	98.9	
35.	136	WEISS Alexander	Bayern	54.0	32.5	86.5	
36.	6	FRANK Emilian	Bayern	34.8	50.5	85.3	
37.	475	MOSER Johannes	Bayern	54.8	29.6	84.4	
38.	461	WITTMANN Korbinian	Bayern	21.8	41.0	62.8	
NA	397	BADHORN Ludwig	Bayern			-	-

NA	884	GOTTSCHALK Theo	Bayern				-	-
NA	342	EDER Tim	Bayern				-	-
NA	343	DRÖSSLER Frederick	Bayern				-	-

M - Schüsse wurden editiert!

Ausdruck vom: 14.07.2024 19:43:37 - DISAG OpticScoreServer



Guschu-Light Lichtgewehr Schüler II w

13.07.2024

Platz	Passnr.	Name	Verein	Serien		Gesamt	Bem.
1 .	971	WITTY Emma	Bayern	97.3	98.6	195.9	
2 .	519	EDER Fiona	Bayern	85.6	88.2	173.8	
3 .	821	DEBATIN Hannah	Bayern	78.9	85.6	164.5	
4 .	133	DOPPELHAMMER Magdalena	Bayern	81.9	82.4	164.3	
5 .	382	MULINSKI Emma	Bayern	70.0	83.8	153.8	
6 .	45	BLEICHER Katharina	Bayern	75.7	77.1	152.8	
7 .	944	RENNER Emma	Bayern	74.5	75.6	150.1	
8 .	842	MÜLLER Cäcilia	Bayern	71.1	73.4	144.5	
9 .	407	MAY Magdalena	Bayern	74.5	66.6	141.1	
10 .	388	KLOIBER Marina	Bayern	66.8	74.0	140.8	
11 .	402	EHRMAYR Franziska	Bayern	68.5	68.0	136.5	
12 .	646	WEBER Theresa	Bayern	60.4	68.0	128.4	
13 .	398	BIEBEL Emilia	Bayern	59.4	61.2	120.6	
14 .	824	KLETTER Luisa	Bayern	60.6	56.3	116.9	
15 .	942	KARL Franziska	Bayern	44.5	70.0	114.5	
16 .	1096	GÜRTNER Sophie	Bayern	67.4	46.5	113.9	
17 .	819	BERGRATH Eleanor	Bayern	50.6	63.2	113.8	
18 .	399	BIEBEL Lena	Bayern	47.1	66.5	113.6	
19 .	258	HUIHUI Emilia	Bayern	55.7	57.1	112.8	
20 .	645	STÖCKL Emma	Bayern	58.2	46.0	104.2	
21 .	403	FRICKE Emma	Bayern	47.7	48.2	95.9	
22 .	338	MEIR Annika	Bayern	51.2	41.8	93.0	
23 .	817	HÖPFEL Eva	Bayern	56.0	36.7	92.7	
24 .	394	ZELLNER Sophie	Bayern	43.9	48.3	92.2	
25 .	350	KRACUN Marie	Bayern	44.4	42.3	86.7	
26 .	46	RIEDERER Saskia	Bayern	29.6	21.5	51.1	
27 .	344	SCHNEIDER Helena	Bayern	14.6	3.3	17.9	
NA	486	UNTERMAIERHOFER Franziska	Bayern			-	-
NA	897	KÜBELSBECK Theresa	Bayern			-	-
NA	182	KOLLER Jana	OSB			-	-



Guschu-Light Lichtgewehr Schüler III m

13.07.2024

Platz	Passnr.	Name	Verein	Serien		Gesamt	Bem.
1 .	643	BERGNER Elias	Bayern	71.3	68.6	139.9	
2 .	1112	NEUDERT Felix	Bayern	68.6	69.1	137.7	
3 .	199	SCHILLER Anton	Bayern	71.6	47.7	119.3	
4 .	725	NIEDERMAIER Benedikt	Bayern	55.0	48.7	103.7	
5 .	813	CHILIAN Valentin	Bayern	40.2	34.5	74.7	
6 .	201	KRAUS Jakob	Bayern	36.1	37.9	74.0	
7 .		STAHL Leo	Bayern	41.7	28.1	69.8	
8 .	460	WEINDLER Jonas	Bayern	39.4	30.2	69.6	
NA	801	IBERL Jonas	Bayern			-	-



Guschu-Light Lichtgewehr Schüler III w

13.07.2024

Platz	Passnr.	Name	Verein	Serien		Gesamt	Bem.
1 .		FUNKE Thea Liv	Brandenburg	85.0	84.9	169.9	
2 .	184	SEFT Anna	OSB	75.1	78.5	153.6	
3 .	794	GRASRUCK Paula	Bayern	77.6	66.0	143.6	
4 .	9	REINDL Emma	Bayern	69.6	69.5	139.1	
5 .	8	NITZL Miriam	Bayern	54.9	72.4	127.3	
6 .	935	KODALLE Clara	Bayern	58.8	67.0	125.8	
7 .	492	WIESINGER Emma	Bayern	49.8	71.6	121.4	
8 .	700	WEIDLICH Rebecca	Bayern	61.5	58.1	119.6	
9 .	294	MARTIN Hannah	Bayern	46.4	57.6	104.0	
10 .	802	FEHLER Julia	Bayern	38.8	57.8	96.6	
11 .	1122	BAUR Lilly	Bayern	44.5	50.6	95.1	
12 .	410	SEITZ Lena	Bayern	49.8	42.2	92.0	
13 .	803	KAHL Elena	Bayern	42.8	22.7	65.5	
14 .	727	FREIBERGER Theresa	Bayern	32.9	10.9	43.8	
15 .	1095	GIESSWEIN Lisa	Bayern	9.6	25.3	34.9	
16 .	345	SCHNEIDER Soraya	Bayern	7.7		7.7	



Guschu-Light Lichtpistole Schüler I m

13.07.2024

Platz	Passnr.	Name	Verein	Serien		Gesamt	Bem.
1 .	626	EINFINGER Lukas	Bayern	77	76	153	
2 .	72	BÄUML Jakob	Bayern	67	83	150	
3 .	374	DUSCHEK Peter	Bayern	64	74	138	
4 .	75	RÖDL Tom	Bayern	72	65	137	
5 .	625	HASKIN Robert	Bayern	68	66	134	
6 .	924	FÖRST Moritz	Bayern	53	72	125	
7 .	627	BAUR Jack	Bayern	69	52	121	
8 .	690	FRIEDEBACH Philipp	Bayern	57	41	98	
9 .	941	MEYER David	Bayern	39	45	84	



Guschu-Light Lichtpistole Schüler I w

13.07.2024

Platz	Passnr.	Name	Verein	Serien		Gesamt	Bem.
1 .	648	WEBER Marlene	Bayern	84	84	168	
2 .	649	LEITNER Elisabeth	Bayern	73	86	159	
3 .	838	GRUND Hannah	Bayern	83	72	155	
4 .	548	WANNER Tamara	Bayern	73	80	153	
5 .	925	FÖRTSCH Luana	Bayern	85	64	149	
6 .	54	ZANT Anna	Bayern	67	73	140	
7 .	940	KARL Marie	Bayern	54	52	106	
8 .	741	NEGLER Hanna	Bayern	39	63	102	



Guschu-Light Lichtpistole Schüler II m

13.07.2024

Platz	Passnr.	Name	Verein	Serien		Gesamt	Bem.
1 .	928	GIDOFALVY Aron	Bayern	72	61	133	
2 .	89	ULRICH Jonas	Bayern	65	61	126	
3 .	929	GIDOFALVY Abel	Bayern	65	54	119	
4 .	331	OTTLIK Paul	Bayern	54	41	95	
5 .	506	AUGUSTIN Xaver	Bayern	34	31	65	

Ausdruck vom: 14.07.2024 19:32:10 - DISAG OpticScoreServer



Guschu-Light Lichtpistole Schüler II w

13.07.2024

Platz	Passnr.	Name	Verein	Serien		Gesamt	Bem.
1 .	848	MENZEL Laura	Bayern	27	52	79	

Ausdruck vom: 14.07.2024 19:22:26 - DISAG OpticScoreServer



Guschu-Light Lichtpistole Schüler III m

13.07.2024

Platz	Passnr.	Name	Verein	Serien		Gesamt	Bem.
1.	86	MATZKE Moritz	Bayern	29	32	61	

Ausdruck vom: 14.07.2024 19:21:42 - DISAG OpticScoreServer



Guschu-Light Lichtpistole Schüler III w

13.07.2024

Platz	Passnr.	Name	Verein	Serien		Gesamt	Bem.
1 .	812	HEROLD Katharina	Bayern	41	50	91	

Ausdruck vom: 14.07.2024 19:20:59 - DISAG OpticScoreServer



Guschu-Light Lichtgewehr Schüler I m

13.07.2024

Platz	Passnr.	Name	Verein	Serien		Gesamt	Bem.
1 .	197	SPINDLER Florian	OSB	101.1	100.1	201.2	
2 .	78	MÜLLER Alexander	Bayern	98.1	97.4	195.5	
3 .	187	WEIDINGER Mika	OSB	96.9	97.3	194.2	
4 .	192	BERGER Julian	OSB	92.2	94.7	186.9	
5 .	346	MILDENBERGER Ilian	Bayern	90.1	95.3	185.4	
6 .	491	WIESINGER Jakob	Bayern	90.5	93.5	184.0	
7 .	193	PENTZKOFER Kristian	OSB	93.9	87.5	181.4	
8 .	396	BADHORN Alexander	Bayern	85.3	95.9	181.2	
9 .	200	HORN Emil	Bayern	92.1	87.1	179.2	
10 .	972	BINDER Jonas	Bayern	85.7	93.4	179.1	
11 .	1042	SCHWINGSHACKL Michael	Südtirol	86.3	91.8	178.1	
12 .	797	SOFFA Thorben	Bayern	84.0	93.4	177.4	
13 .	160	RAUSCHEN Jonas	Bayern	89.1	87.5	176.6	
14 .	159	RAUSCHEN Kilian	Bayern	82.8	87.9	170.7	
15 .	920	MAYER Valentin	Bayern	84.5	85.2	169.7	
16 .	1004	RUPP Tobias	Bayern	83.5	84.5	168.0	
17 .	896	KÜBELSBECK Raphael	Bayern	84.3	83.7	168.0	
18 .	533	BERGLER Andreas	Bayern	83.8	81.2	165.0	
19 .	422	LINDERMAYR Ben	Bayern	72.9	92.0	164.9	
20 .	87	ARTMANN Niklas	Bayern	81.2	83.3	164.5	
21 .	1094	NISSLEIN Tim	OSB	81.9	81.6	163.5	
22 .	516	MÜLLER Johannes	Bayern	82.4	81.1	163.5	
23 .	532	HAMMER Bastian	Bayern	76.4	86.4	162.8	
24 .	937	FÖRST Moritz	Bayern	85.3	77.5	162.8	
25 .	282	BAUMGARTNER Lorenz	Bayern	78.1	84.1	162.2	
26 .	485	UNTERMAIERHOFER Leonhard	Bayern	81.9	79.8	161.7	
27 .	796	STAHL Vincent	Bayern	79.4	81.1	160.5	
28 .	1010	BAUER Jannis	Bayern	79.4	79.8	159.2	
29 .	425	ARTNER Jonas	Bayern	81.8	77.3	159.1	
30 .	91	KUPFER Felix	Bayern	79.2	79.1	158.3	
31 .	478	PERFLER Tim	Bayern	77.2	80.8	158.0	
32 .	847	FRITZ Luca	Bayern	81.2	76.3	157.5	
33 .	356	BRAUN Hannes	Bayern	78.4	78.1	156.5	
34 .	693	WINTER Felix	Bayern	75.6	80.5	156.1	
35 .	355	KRACUN Marko	Bayern	80.9	73.4	154.3	
36 .	705	SCHÄFERS Leon	Bayern	80.0	74.0	154.0	
37 .	30	SMARSLIK Daniel	Bayern	75.1	78.7	153.8	
38 .	307	WEISS Laurin	Bayern	71.4	80.8	152.2	
39 .	417	STEINHERR Simon	Bayern	69.8	82.0	151.8	
40 .	808	HOFMANN Luis	Bayern	76.2	75.4	151.6	

41 .	921	SCHAMPER Luis	Bayern	74.3	76.8	151.1	
42 .	1021	STEIGER Elias	Bayern	75.2	75.9	151.1	
43 .	385	RIGOLE Sebastian	Bayern	76.3	74.8	151.1	
44 .	107	BEER Elias	Bayern	71.7	79.3	151.0	
45 .	530	SCHNEIDER Konstantin	Bayern	69.7	78.8	148.5	
46 .	477	WINKLER Clemens	Bayern	81.7	66.7	148.4	
47 .	219	JAKAB Maté	Bayern	72.4	75.3	147.7	
48 .	135	PLATTNER Leo	Bayern	80.5	67.2	147.7	
49 .	689	GERSTENBERG Paul	Bayern	74.2	73.4	147.6	
50 .	638	HERTLEIN Alexander	Bayern	71.0	76.3	147.3	
51 .	198	KRAUS Anton	Bayern	75.2	71.8	147.0	
52 .	826	FUCHS Valentin	Bayern	71.0	74.9	145.9	
53 .	188	BURKHARDT Eric	OSB	73.8	72.0	145.8	
54 .	423	LESTI Simon	Bayern	80.0	64.4	144.4	
55 .	489	GROB Thomas	Bayern	71.1	72.9	144.0	
56 .	418	SCHIESSL Philipp	Bayern	72.1	69.8	141.9	
57 .	261	RÖHNER Bastian	Bayern	70.8	69.9	140.7	
58 .	424	ARTNER Tobias	Bayern	58.6	81.8	140.4	
59 .	312	REGAU Jakob	Bayern	66.6	72.0	138.6	
60 .	287	RIEPERTINGER Hannes	Bayern	69.2	69.4	138.6	
61 .	427	STELZER Alexander	Bayern	71.4	66.2	137.6	
62 .	809	KÖNIG Valentin	Bayern	67.0	68.5	135.5	
63 .	404	FRICKE Kilian	Bayern	76.2	58.3	134.5	
64 .	870	WAGNER Philipp	Bayern	64.1	68.0	132.1	
65 .	748	RHAME John	Bayern	66.5	65.5	132.0	
66 .	450	EGGER Jakob	Bayern	75.0	56.5	131.5	
67 .	804	KAHL Erik	Bayern	68.1	62.8	130.9	
68 .	473	BRANDMÜLLER Jakob	Bayern	68.8	61.8	130.6	
69 .	283	GASTL Anton	Bayern	57.1	73.0	130.1	
70 .	61	LÖFFLER-SCHUBERT Joel-Jamal	Bayern	66.1	63.7	129.8	
71 .	868	HASLBECK Anton	Bayern	49.4	79.8	129.2	
72 .	476	BACHHUBER Luis	Bayern	65.1	62.8	127.9	
73 .	507	STANGNER Mattis	Bayern	59.1	67.9	127.0	
74 .	845	GIRRBACH Moritz	Bayern	62.1	64.2	126.3	
75 .	800	MÜLLER Ryan	Bayern	56.6	68.0	124.6	
76 .	377	ZIEGLER Johannes	Bayern	63.8	60.6	124.4	
77 .	408	MAY Moritz	Bayern	60.0	63.3	123.3	
78 .	1011	WANDAM Paul	Bayern	59.4	62.5	121.9	
79 .	400	BLAIMER Korbinian	Bayern	63.2	57.9	121.1	
80 .	322	MARLON Graf	Bayern	54.8	66.2	121.0	
81 .	93	ANGERMEIER Raphael	Bayern	56.7	62.1	118.8	
82 .	931	NOVAK Merlin	Bayern	41.6	74.2	115.8	
83 .	228	PROBST Ludwig	Bayern	50.7	62.5	113.2	
84 .	260	GRUBER Lukas	Bayern	56.6	54.3	110.9	
85 .	286	MAISCH Felix	Bayern	63.8	46.2	110.0	
86 .	647	BERGNER Julian	Bayern	51.0	56.7	107.7	
87 .	116	FEREKIDIS Cesare	Bayern	51.8	54.6	106.4	

88 .	810	KNEISSL Johannes	Bayern	48.6	52.8	101.4	
89 .	82	FÜHRLICH Jan	Bayern	47.8	52.6	100.4	
90 .	139	RAMMELSBERGER Julius	Bayern	44.0	54.6	98.6	
91 .		RENNER Fabian	Bayern	39.9	57.0	96.9	
92 .	190	ADLHOCH Michael	OSB	43.3	47.7	91.0	
93 .	311	NIEDERLE Joel	Bayern	50.0	39.7	89.7	
94 .	411	UMSCHADEN Paul	Bayern	42.3	33.6	75.9	
NA	225	PÖPPL Leo	Bayern			-	-
NA	329	BERGER Lukas	Bayern			-	-
NA	354	WEBER Lukas	Bayern			-	-
NA	345	SCHNEIDER Soraya	Bayern			-	-
NA	751	ZEIGERMANN Mark	Bayern			-	-
NA	891	BREITSAMETER Paul	Bayern			-	-
NA	943	RENNER Tobias	Bayern			-	-
NA	469	MUMINOVIC Malik	Bayern			-	-



Guschu-Light Lichtgewehr Schüler I w

13.07.2024

Platz	Passnr.	Name	Verein	Serien		Gesamt	Bem.
1.	557	HAGL Lena-Marie	Bayern	92.8	92.4	185.2	
2.	196	HENSEL Amelie	OSB	96.2	88.3	184.5	
3.	930	LIPS Greta	Bayern	94.1	90.2	184.3	
4.	743	HECKEL Zara	Bayern	90.3	92.0	182.3	
5.	419	KÖLBL Johanna	Bayern	89.0	92.9	181.9	
6.	186	LICHTENWALD Romy	OSB	92.3	87.1	179.4	
7.	138	OBERMEIER Xenia	Bayern	88.3	90.1	178.4	
8.	946	AIGNER Josefine	Bayern	86.2	90.6	176.8	
9.	1101	MILLER Laura	Bayern	86.9	89.8	176.7	
10.	134	ROTHBAUER Paula	Bayern	86.6	89.1	175.7	
11.	121	BACH Emelie	WSV	86.1	89.0	175.1	
12.	42	BREITENBACH Milena	Bayern	89.8	84.1	173.9	
13.	518	OSTERMAIER Elisa	Bayern	82.5	89.9	172.4	
14.	88	ULRICH Julia	Bayern	88.6	82.9	171.5	
15.	1088	BAYER Teressa	Bayern	83.6	87.3	170.9	
16.	547	HASIC Elisa	Bayern	85.3	85.4	170.7	
17.	1000	DEMHARTER Loni	Bayern	90.2	79.5	169.7	
18.	515	SCHUHBÄCK Raphaela	Bayern	83.1	86.1	169.2	
19.	94	WURM Magdalena	Bayern	79.0 M	88.4 M	167.4	
20.	742	KICK Franka	Bayern	73.9	93.4	167.3	
21.	259	HUIHUI Helena	Bayern	86.5	77.3	163.8	
22.	936	KODALLE Johanna	Bayern	87.7	75.6	163.3	
23.	517	FÄRBER Amelie	Bayern	75.6	81.4	157.0	
24.	3	HEIDEMANN Sara	Bayern	76.6	79.8	156.4	
25.	137	STRASSER Julia	Bayern	81.7	73.1	154.8	
26.	285	JUST Sara	Bayern	75.2	79.2	154.4	
27.	799	ECKSTEIN Leonie	Bayern	72.2	81.9	154.1	
28.	947	THALHAUSER Antonia	Bayern	81.5	72.6	154.1	
29.	309	WAGNER Louisa	Bayern	75.2	76.5	151.7	
30.	536	KREUZER Lilia	Bayern	74.7	76.5	151.2	
31.	308	WEGE Hannah	Bayern	76.0	74.3	150.3	
32.	383	MULINSKI Julia	Bayern	71.8	77.7	149.5	
33.	560	BAYER Helene	Bayern	72.8	76.7	149.5	
34.	898	EICHWALD Dominika	Bayern	67.2	81.0	148.2	
35.	1019	JEROUSCHEK Julia	Bayern	73.1	74.7	147.8	
36.	927	FRANKE Astrid	Bayern	69.8	77.4	147.2	
37.	1006	GERHARDS Marie	Bayern	76.9	70.1	147.0	
38.	207	VOLK Sofia	Bayern	69.5	76.9	146.4	
39.	569	ZIEGLER Monika	Bayern	66.2	79.5	145.7	

40 .	550	BENEDEK Valentina	Bayern	74.0	71.4	145.4	
41 .	805	RENNER Sophia	Bayern	75.6	69.7	145.3	
42 .	1098	KAMMERMEIER Viktoria	Bayern	68.8	76.2	145.0	
43 .	570	HARTMANN Alaara	Bayern	77.6	65.9	143.5	
44 .	869	HASLBECK Diana	Bayern	67.3	75.9	143.2	
45 .	806	SODERER Fiona	Bayern	74.1	68.5	142.6	
46 .	795	GIESSWEIN Jasmin	Bayern	63.7	77.4	141.1	
47 .	998	LEUKEFELD Isabella	Bayern	80.4	60.6	141.0	
48 .	395	ZELLNER Emily	Bayern	67.5	70.8	138.3	
49 .	218	ESER Mirijam	Bayern	65.6	69.7	135.3	
50 .	185	GERHARDT Manuela	OSB	75.3	60.0	135.3	
51 .	531	SCHNEIDER Laura	Bayern	59.2	75.1	134.3	
52 .	759	SPIES Larissa	Bayern	65.7	67.2	132.9	
53 .	323	HANNA Popfinger	Bayern	57.6	73.0	130.6	
54 .	889	GABEL Anna-Lena	Bayern	65.1	65.4	130.5	
55 .	750	SCHULZE Magdalena	Bayern	62.4	67.5	129.9	
56 .	203	KRAUS Johanna	Bayern	69.9	58.9	128.8	
57 .	393	MEGYESI Anna	Bayern	65.2	63.2	128.4	
58 .	415	SCHWEGLER Sophia	Bayern	63.4	63.7	127.1	
59 .	939	KARL Marie	Bayern	71.0	55.9	126.9	
60 .	293	MARTIN Melina	Bayern	62.8	63.4	126.2	
61 .	406	HACK Charlotte	Bayern	55.2	70.8	126.0	
62 .	717	STADLBAUER Sophia	Bayern	61.9	58.6	120.5	
63 .	310	ENGEL Elina	Bayern	69.9	46.2	116.1	
64 .	1108	REINHARDT Johanna	Bayern	63.1	51.4	114.5	
65 .	1102	PASTSCHENKO Paula	Bayern	55.3	58.1	113.4	
66 .	474	MOSER Theresa	Bayern	66.6	46.8	113.4	
67 .	208	STARK Anna	Bayern	54.5	54.9	109.4	
68 .	559	FRITSCH Luisa	Bayern	54.8	49.9	104.7	
69 .	96	SCHRÖCK Helena	Bayern	44.9	48.9	93.8	
70 .	18	WIESHEU Luzie	Bayern	54.7	36.8	91.5	
71 .	798	SCHÜTZ Victoria	Bayern	42.0	44.0	86.0	
72 .	549	BENEDEK Florentine	Bayern	41.5	41.1	82.6	
73 .	724	BARSAN Stefanie	Bayern	39.3	32.6	71.9	
74 .	284	HALLER Anna	Bayern	18.6	19.7	38.3	
NA	535	WÜHR Maximiliane	Bayern			-	-
NA	558	WIRTH Katharina	Bayern			-	-
NA	191	KOLLER Sina	OSB			-	-
NA	357	BARASINSKA Oliwia	Bayern			-	-

M - Schüsse wurden editiert!

Ausdruck vom: 14.07.2024 19:41:17 - DISAG OpticScoreServer



Guschu-Light Lichtgewehr Schüler II m

13.07.2024

Platz	Passnr.	Name	Verein	Serien		Gesamt	Bem.
1.	970	MARVAN Karim	Bayern	95.3	93.2	188.5	
2.	966	OTT Leonhard	Bayern	91.2	83.0	174.2	
3.	434	PETTER Sam	Bayern	85.9	80.8	166.7	
4.	871	FRÖDE Max	Bayern	79.9	86.0	165.9	
5.	205	SCHILLER Paul	Bayern	77.6	81.2	158.8	
6.	132	WINKLHOFER Laurenz	Bayern	68.6	85.4	154.0	
7.	352	WIERL Johannes	Bayern	82.1	70.0	152.1	
8.	183	SEFT Jakob	OSB	81.6	69.0	150.6	
9.	825	KLETTER Robin	Bayern	77.9	72.6	150.5	
10.	73	MÜLLER Anton	Bayern	76.8	72.0	148.8	
11.	189	ROIDL Timo	OSB	74.0	73.9	147.9	
12.	47	ZEIGERMANN Oskar	Bayern	74.2	73.2	147.4	
13.	480	ANGERER Timo	Bayern	68.3	77.2	145.5	
14.	409	SEITZ Johannes	Bayern	65.1	78.6	143.7	
15.	459	WEINDLER Lukas	Bayern	69.6	74.1	143.7	
16.	12	FISCHER Lukas	Bayern	70.7	72.1	142.8	
17.	846	STRAUCH Felix	Bayern	67.0	70.6	137.6	
18.	644	ROEDER Lorenz	Bayern	62.5	75.0	137.5	
19.	726	FREIBERGER Stefan	Bayern	67.3	68.9	136.2	
20.	472	BLEY Karl	Bayern	67.1	66.3	133.4	
21.	353	BLISSE Henry	Bayern	59.7	72.5	132.2	
22.	886	THIEMIG Julian	Bayern	66.1	63.6	129.7	
23.	1001	DEMHARTER Armin	Bayern	76.5	51.2	127.7	
24.	206	KRAUS Philipp	Bayern	64.7	59.0	123.7	
25.	384	LANDFRIED Tobias	Bayern	74.9	43.4	118.3	
26.	811	FUNKE Sascha	Bayern	48.8	62.8	111.6	
27.	807	MAYER Luca	Bayern	59.2	51.2	110.4	
28.	392	KERLING Elias	Bayern	56.3	52.7	109.0	
29.	401	BRUMMER Leon	Bayern	53.5	55.4	108.9	
30.	351	BRAUN Jonas	Bayern	55.0	52.0	107.0	
31.	843	SEITZ Louis	Bayern	53.9	52.9	106.8	
32.	281	BACHMAIER Leonhard	Bayern	58.3	47.7	106.0	
33.	62	HABERZETT Michael	Bayern	52.4	53.2	105.6	
34.	386	LI Bohan	Bayern	63.5 M	35.4 M	98.9	
35.	136	WEISS Alexander	Bayern	54.0	32.5	86.5	
36.	6	FRANK Emilian	Bayern	34.8	50.5	85.3	
37.	475	MOSER Johannes	Bayern	54.8	29.6	84.4	
38.	461	WITTMANN Korbinian	Bayern	21.8	41.0	62.8	
NA	397	BADHORN Ludwig	Bayern			-	-

NA	884	GOTTSCHALK Theo	Bayern				-	-
NA	342	EDER Tim	Bayern				-	-
NA	343	DRÖSSLER Frederick	Bayern				-	-

M - Schüsse wurden editiert!

Ausdruck vom: 14.07.2024 19:43:37 - DISAG OpticScoreServer



Guschu-Light Lichtgewehr Schüler II w

13.07.2024

Platz	Passnr.	Name	Verein	Serien		Gesamt	Bem.
1 .	971	WITTY Emma	Bayern	97.3	98.6	195.9	
2 .	519	EDER Fiona	Bayern	85.6	88.2	173.8	
3 .	821	DEBATIN Hannah	Bayern	78.9	85.6	164.5	
4 .	133	DOPPELHAMMER Magdalena	Bayern	81.9	82.4	164.3	
5 .	382	MULINSKI Emma	Bayern	70.0	83.8	153.8	
6 .	45	BLEICHER Katharina	Bayern	75.7	77.1	152.8	
7 .	944	RENNER Emma	Bayern	74.5	75.6	150.1	
8 .	842	MÜLLER Cäcilia	Bayern	71.1	73.4	144.5	
9 .	407	MAY Magdalena	Bayern	74.5	66.6	141.1	
10 .	388	KLOIBER Marina	Bayern	66.8	74.0	140.8	
11 .	402	EHRMAYR Franziska	Bayern	68.5	68.0	136.5	
12 .	646	WEBER Theresa	Bayern	60.4	68.0	128.4	
13 .	398	BIEBEL Emilia	Bayern	59.4	61.2	120.6	
14 .	824	KLETTER Luisa	Bayern	60.6	56.3	116.9	
15 .	942	KARL Franziska	Bayern	44.5	70.0	114.5	
16 .	1096	GÜRTNER Sophie	Bayern	67.4	46.5	113.9	
17 .	819	BERGRATH Eleanor	Bayern	50.6	63.2	113.8	
18 .	399	BIEBEL Lena	Bayern	47.1	66.5	113.6	
19 .	258	HUIHUI Emilia	Bayern	55.7	57.1	112.8	
20 .	645	STÖCKL Emma	Bayern	58.2	46.0	104.2	
21 .	403	FRICKE Emma	Bayern	47.7	48.2	95.9	
22 .	338	MEIR Annika	Bayern	51.2	41.8	93.0	
23 .	817	HÖPFEL Eva	Bayern	56.0	36.7	92.7	
24 .	394	ZELLNER Sophie	Bayern	43.9	48.3	92.2	
25 .	350	KRACUN Marie	Bayern	44.4	42.3	86.7	
26 .	46	RIEDERER Saskia	Bayern	29.6	21.5	51.1	
27 .	344	SCHNEIDER Helena	Bayern	14.6	3.3	17.9	
NA	486	UNTERMAIERHOFER Franziska	Bayern			-	-
NA	897	KÜBELSBECK Theresa	Bayern			-	-
NA	182	KOLLER Jana	OSB			-	-



Guschu-Light Lichtgewehr Schüler III m

13.07.2024

Platz	Passnr.	Name	Verein	Serien		Gesamt	Bem.
1 .	643	BERGNER Elias	Bayern	71.3	68.6	139.9	
2 .	1112	NEUDERT Felix	Bayern	68.6	69.1	137.7	
3 .	199	SCHILLER Anton	Bayern	71.6	47.7	119.3	
4 .	725	NIEDERMAIER Benedikt	Bayern	55.0	48.7	103.7	
5 .	813	CHILIAN Valentin	Bayern	40.2	34.5	74.7	
6 .	201	KRAUS Jakob	Bayern	36.1	37.9	74.0	
7 .		STAHL Leo	Bayern	41.7	28.1	69.8	
8 .	460	WEINDLER Jonas	Bayern	39.4	30.2	69.6	
NA	801	IBERL Jonas	Bayern			-	-



Guschu-Light Lichtgewehr Schüler III w

13.07.2024

Platz	Passnr.	Name	Verein	Serien		Gesamt	Bem.
1 .		FUNKE Thea Liv	Brandenburg	85.0	84.9	169.9	
2 .	184	SENFTE Anna	OSB	75.1	78.5	153.6	
3 .	794	GRASRUCK Paula	Bayern	77.6	66.0	143.6	
4 .	9	REINDL Emma	Bayern	69.6	69.5	139.1	
5 .	8	NITZL Miriam	Bayern	54.9	72.4	127.3	
6 .	935	KODALLE Clara	Bayern	58.8	67.0	125.8	
7 .	492	WIESINGER Emma	Bayern	49.8	71.6	121.4	
8 .	700	WEIDLICH Rebecca	Bayern	61.5	58.1	119.6	
9 .	294	MARTIN Hannah	Bayern	46.4	57.6	104.0	
10 .	802	FEHLER Julia	Bayern	38.8	57.8	96.6	
11 .	1122	BAUR Lilly	Bayern	44.5	50.6	95.1	
12 .	410	SEITZ Lena	Bayern	49.8	42.2	92.0	
13 .	803	KAHL Elena	Bayern	42.8	22.7	65.5	
14 .	727	FREIBERGER Theresa	Bayern	32.9	10.9	43.8	
15 .	1095	GIESSWEIN Lisa	Bayern	9.6	25.3	34.9	
16 .	345	SCHNEIDER Soraya	Bayern	7.7		7.7	



Guschu-Light Lichtpistole Schüler I m

13.07.2024

Platz	Passnr.	Name	Verein	Serien		Gesamt	Bem.
1 .	626	EINFINGER Lukas	Bayern	77	76	153	
2 .	72	BÄUML Jakob	Bayern	67	83	150	
3 .	374	DUSCHEK Peter	Bayern	64	74	138	
4 .	75	RÖDL Tom	Bayern	72	65	137	
5 .	625	HASKIN Robert	Bayern	68	66	134	
6 .	924	FÖRST Moritz	Bayern	53	72	125	
7 .	627	BAUR Jack	Bayern	69	52	121	
8 .	690	FRIEDEBACH Philipp	Bayern	57	41	98	
9 .	941	MEYER David	Bayern	39	45	84	



Guschu-Light Lichtpistole Schüler I w

13.07.2024

Platz	Passnr.	Name	Verein	Serien		Gesamt	Bem.
1 .	648	WEBER Marlene	Bayern	84	84	168	
2 .	649	LEITNER Elisabeth	Bayern	73	86	159	
3 .	838	GRUND Hannah	Bayern	83	72	155	
4 .	548	WANNER Tamara	Bayern	73	80	153	
5 .	925	FÖRTSCH Luana	Bayern	85	64	149	
6 .	54	ZANT Anna	Bayern	67	73	140	
7 .	940	KARL Marie	Bayern	54	52	106	
8 .	741	NEGLER Hanna	Bayern	39	63	102	



Guschu-Light Lichtpistole Schüler II m

13.07.2024

Platz	Passnr.	Name	Verein	Serien		Gesamt	Bem.
1 .	928	GIDOFALVY Aron	Bayern	72	61	133	
2 .	89	ULRICH Jonas	Bayern	65	61	126	
3 .	929	GIDOFALVY Abel	Bayern	65	54	119	
4 .	331	OTTLIK Paul	Bayern	54	41	95	
5 .	506	AUGUSTIN Xaver	Bayern	34	31	65	



Guschu-Light Lichtpistole Schüler II w

13.07.2024

Platz	Passnr.	Name	Verein	Serien		Gesamt	Bem.
1 .	848	MENZEL Laura	Bayern	27	52	79	

Ausdruck vom: 14.07.2024 19:22:26 - DISAG OpticScoreServer



Guschu-Light Lichtpistole Schüler III m

13.07.2024

Platz	Passnr.	Name	Verein	Serien		Gesamt	Bem.
1.	86	MATZKE Moritz	Bayern	29	32	61	

Ausdruck vom: 14.07.2024 19:21:42 - DISAG OpticScoreServer



Guschu-Light Lichtpistole Schüler III w

13.07.2024

Platz	Passnr.	Name	Verein	Serien		Gesamt	Bem.
1.	812	HEROLD Katharina	Bayern	41	50	91	

Ausdruck vom: 14.07.2024 19:20:59 - DISAG OpticScoreServer